

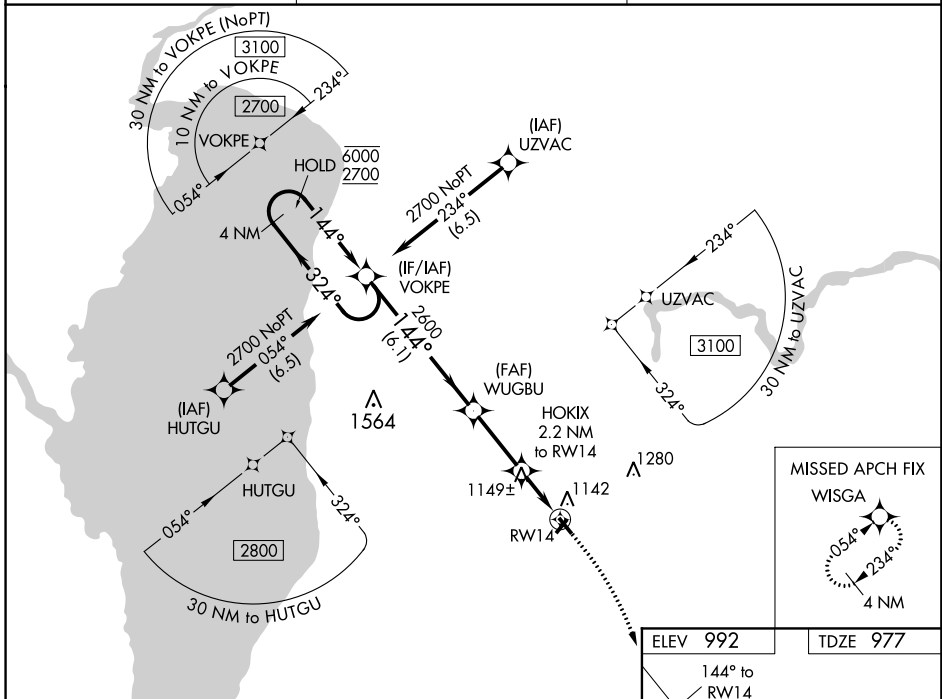
WAAS CH 99625 W14A	APP CRS 144°	Rwy Idg TDZE 977 Apt Elev 992	3600
--	------------------------	---	-------------

RNAV (GPS) RWY 14

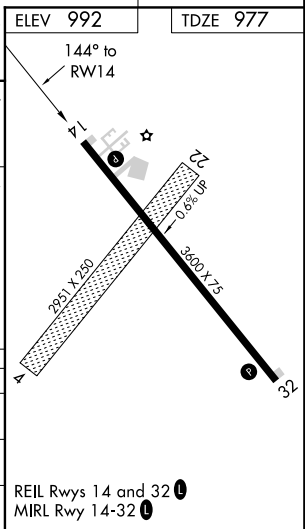
NEW HOLSTEIN MUNI (8D1)

RNP APCH.	MISSED APPROACH: Climb to 1500 then climbing right turn to 3000 direct WISGA and hold.
<p>▼ Rwy 14 helicopter visibility reduction below 3/4 SM NA. Baro-VNAV NA.</p> <p>▲ NA Use Oshkosh altimeter setting, when not received use Appleton altimeter setting.</p>	

OSH ASOS 125.9	MILWAUKEE APP CON 127.0 263.075	UNICOM 123.0 (CTAF) 0
--------------------------	---	---------------------------------



ELEV 992		TDZE 977	
<p>VGSI and RNAV glidepath not coincident (VGSI Angle 3.20/TCH 27).</p> <p>4 NM Holding Pattern</p> <p>GP 3.00° TCH 45</p> <p>*INAV only.</p>			
<p>6000 ← 324°</p> <p>2700 → 144°</p>		<p>2600</p> <p>*1720</p>	
<p>6.1 NM</p>		<p>2.8 NM</p> <p>2.2 NM</p>	
CATEGORY	A	B	D
LPV DA	1358-1 1/8	381 (400-1 1/8)	NA
LNNAV/VNAV DA	1390-1 1/4	413 (400-1 1/4)	NA
LNNAV MDA	1480-1	503 (500-1)	NA



EC-3, 21 MAY 2020 to 18 JUN 2020

EC-3, 21 MAY 2020 to 18 JUN 2020