

VOR/DME MYV 110.8 Chan 45	APP CRS 058°	Rwy Idg TDZE Apt Elev 3158	N/A N/A 3158
---	------------------------	---	---

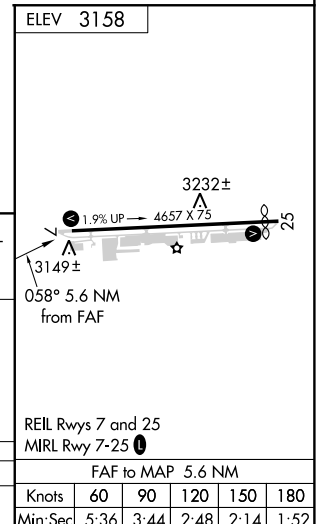
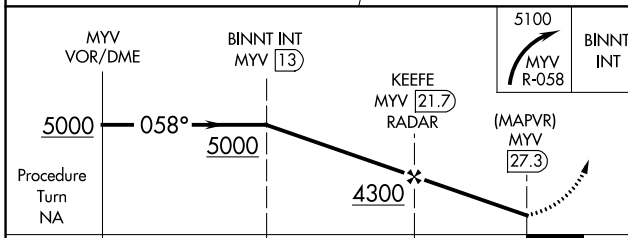
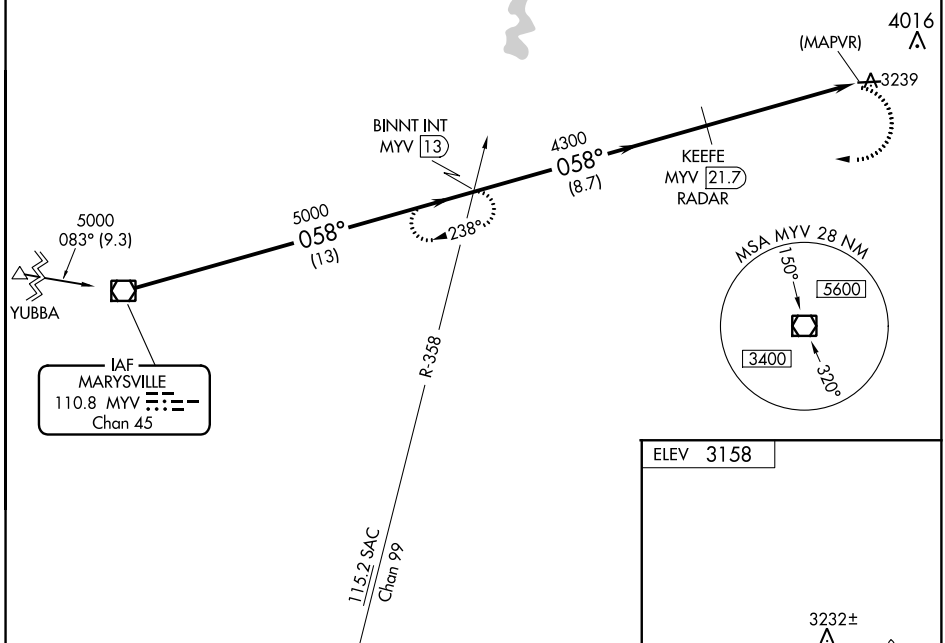
VOR or GPS-A
NEVADA COUNTY (GOO)

NA When local altimeter setting not received, use Emigrant Gap altimeter setting. Circling NA north of Rwy 7-25. Procedure NA at night.

MISSED APPROACH: Climbing right turn to 5100 on MYV R-058 to BINNT INT/MYV 13 DME and hold.

AWOS-3 121.325	NORCAL APP CON 125.4 259.1	UNICOM 122.725 (CTAF)
--------------------------	--------------------------------------	---------------------------------

DME or RADAR REQUIRED



CATEGORY	A	B	C	D	FAF to MAP 5.6 NM					
CIRCLING	4280-1¼ 1122 (1200-1¼)	4280-1½ 1122 (1200-1½)	4280-3 1122 (1200-3)	NA	Knots	60	90	120	150	180
					Min:Sec	5:36	3:44	2:48	2:14	1:52

SW-2, 21 MAY 2020 to 18 JUN 2020

SW-2, 21 MAY 2020 to 18 JUN 2020