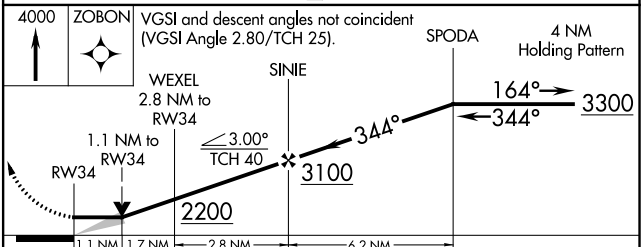
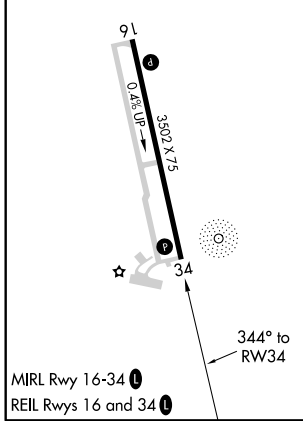
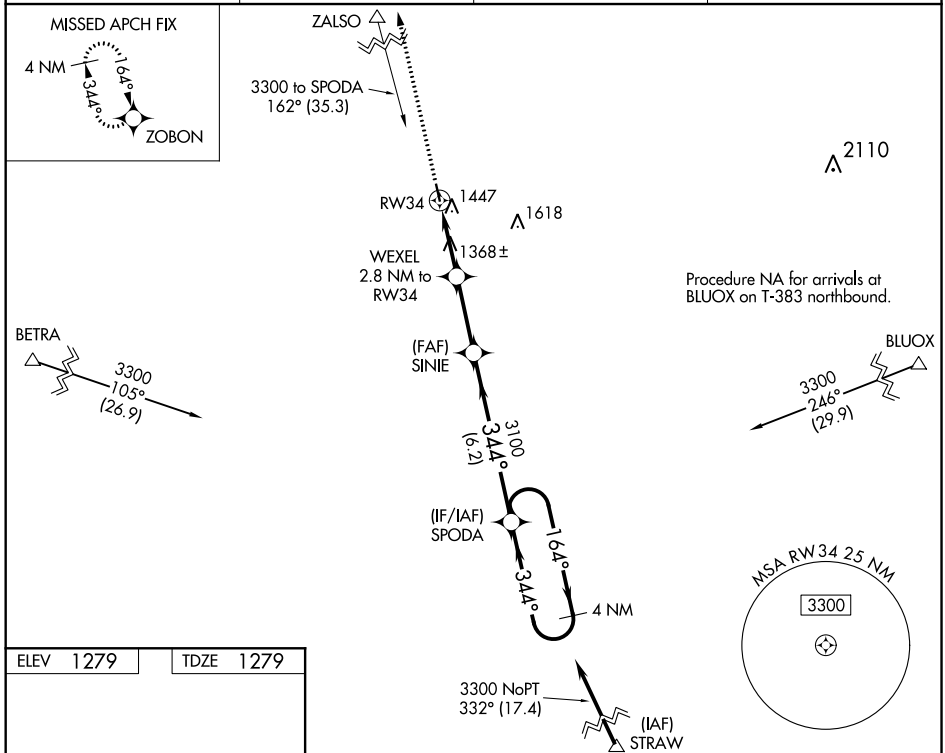


WAAS CH 90326 W34A	APP CRS 344°	Rwy Idg TDZE Apt Elev	3502 1279 1279
--	------------------------	-----------------------------	---

RNAV (GPS) RWY 34

FOSSTON MUNI-ANDERSON FIELD (F'SE)

RNP APCH		MISSED APPROACH: Climb to 4000 direct ZOBON and hold.	
<p>▼ VDP NA when using Thief River Falls altimeter setting. When local altimeter setting not received, use Thief River Falls altimeter setting and increase all MDA 100 feet and increase LP and LNAV Cat C visibility $\frac{3}{8}$ SM, and increase Circling Cat C visibility $\frac{1}{2}$ SM.</p>			
AWOS-3 118.35	MINNEAPOLIS CENTER 134.75 251.1	GCO 121.725	CTAF 122.9



CATEGORY	A	B	C	D
LP MDA	1620-1 341 (400-1)			NA
LNAV MDA	1760-1	481 (500-1)	1760-1 $\frac{3}{8}$ 481 (500-1 $\frac{3}{8}$)	NA
CIRCLING	1860-1	581 (600-1)	1860-1 $\frac{1}{2}$ 581 (600-1 $\frac{1}{2}$)	NA

NC-1, 21 MAY 2020 to 18 JUN 2020

NC-1, 21 MAY 2020 to 18 JUN 2020