

NDB FSE 224	APP CRS 356°	Rwy Idg TDZE Apt Elev	3502 1279 1279
-----------------------	------------------------	-----------------------------	---

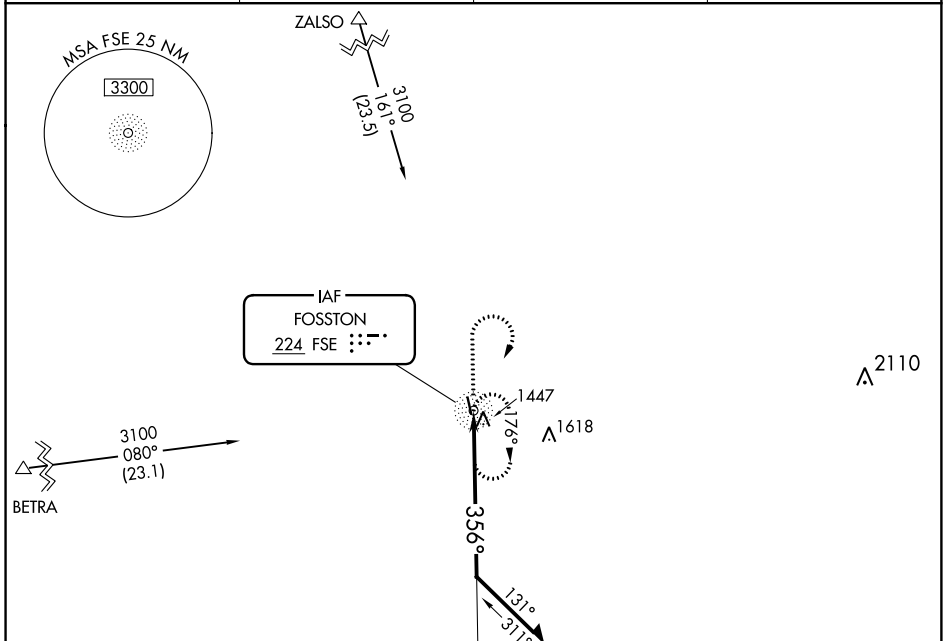
NDB RWY 34

FOSSTON MUNI-ANDERSON FIELD (F'SE)

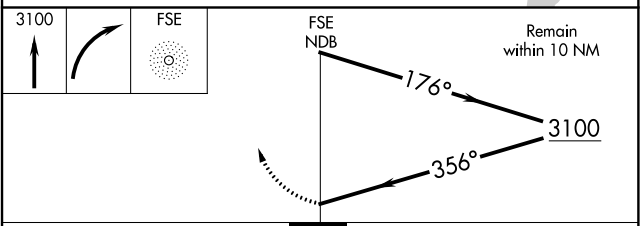
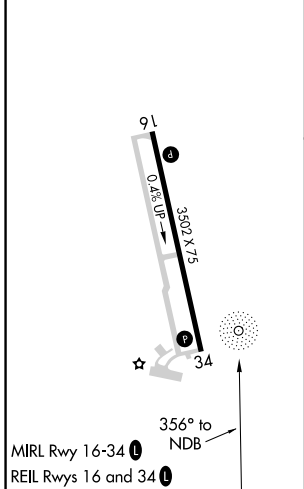
⚠ When local altimeter setting not received, use Thief River Falls Rgnl altimeter setting and increase all MDA 100 feet and increase all Cat A and Circling Cat C visibility ¼ mile.

⚠ MISSED APPROACH: Climb to 3100 then right turn direct FSE NDB and hold.

AWOS-3 118.35	MINNEAPOLIS CENTER 134.75 251.1	GCO 121.725	CTAF 122.9
-------------------------	---	-----------------------	----------------------



ELEV 1279	TDZE 1279
-----------	-----------



CATEGORY	A	B	C	D
S-34	2060-1 781 (800-1)	2060-1¼ 781 (800-1¼)	2060-2½ 781 (800-2½)	NA
CIRCLING	2060-1 781 (800-1)	2060-1¼ 781 (800-1¼)	2060-2½ 781 (800-2½)	NA

NC-1, 21 MAY 2020 to 18 JUN 2020

NC-1, 21 MAY 2020 to 18 JUN 2020