

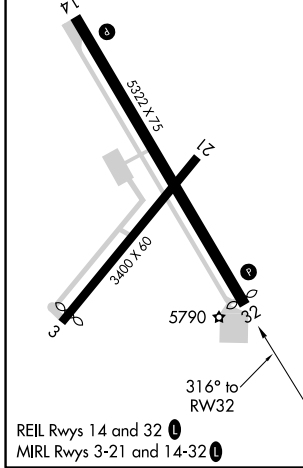
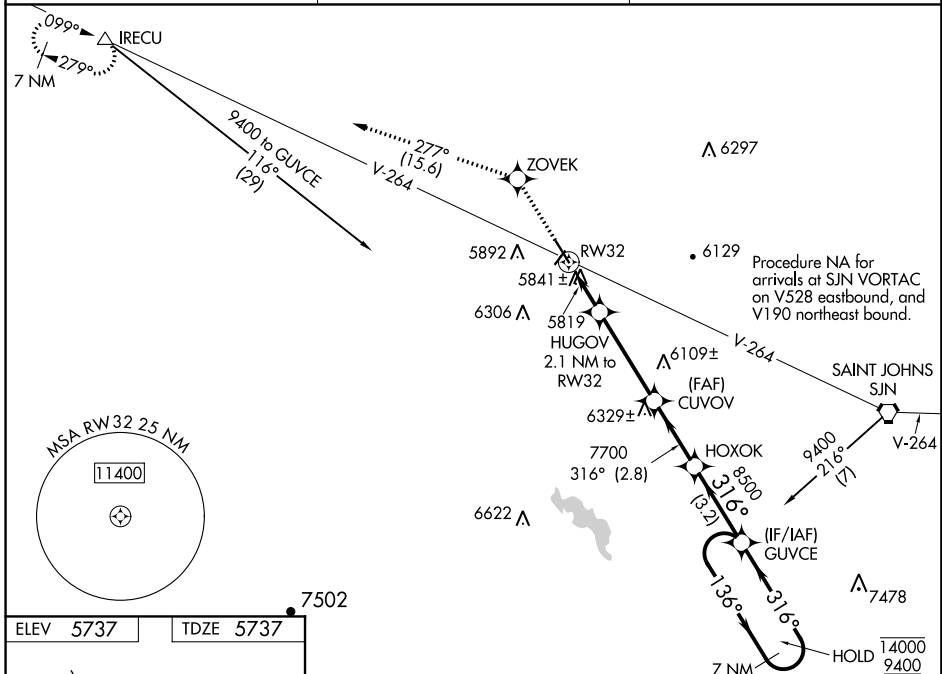
WAAS CH <b>42643</b> <b>W32A</b>	APP CRS <b>316°</b>	Rwy ldg TDZE Apt Elev	<b>5230</b> <b>5737</b> <b>5737</b>
--	------------------------	-----------------------------	---

# RNAV (GPS) RWY 32

ST JOHNS INDUSTRIAL AIR PARK (SJJN)

RNP APCH.	<p><b>▼</b> Rwy 32 helicopter visibility reduction below 1 SM NA. For uncompensated Baro-VNAV systems, LNAV/VNAV NA below -13°C or above 54°C. Rwy 32 Straight-in NA at night. Circling Rwy 3, 32 NA at night.</p>	<p>MISSED APPROACH: Climb to 9400 direct ZOVEK and on track 277° to IRECU and hold.</p>
-----------	--	---

ASOS <b>134.225</b>	ALBUQUERQUE CENTER <b>124.325 288.25</b>	UNICOM <b>122.8 (CTAF) 0</b>
------------------------	---	---------------------------------



9400	ZOVEK	tr 277°	IRECU	VGSI and descent angles not coincident (VGSI Angle 3.00/TCH 40).	7 NM Holding Pattern
*LNAV only		HUGOV 2.1 NM to RW32	CUVOV 7700	HOXOK 8500	136° → 14000 / ← 316° 9400
RW32		*6480	7700		GP 3.08° / TCH 53
2.1 NM		3.7 NM	2.8 NM	3.2 NM	
CATEGORY	A	B	C	D	
LPV DA	5987-1	250 (300-1)			NA
LNAV/VNAV DA	6167-1¼	430 (500-1¼)			NA
LNAV MDA	6140-1	403 (500-1)			NA
<b>C</b> CIRCLING	6260-1 / 523 (600-1)	6280-1 / 543 (600-1)			NA

SW-4, 21 MAY 2020 to 18 JUN 2020

SW-4, 21 MAY 2020 to 18 JUN 2020