

WAAS CH <b>49224</b> <b>W14A</b>	APP CRS <b>136°</b>	Rwy Idg TDZE Apt Elev	<b>5322</b> <b>5736</b> <b>5737</b>
--	------------------------	-----------------------------	---

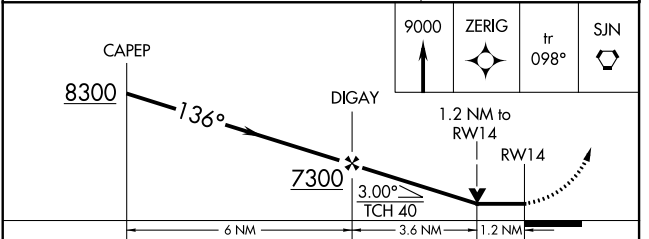
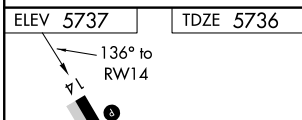
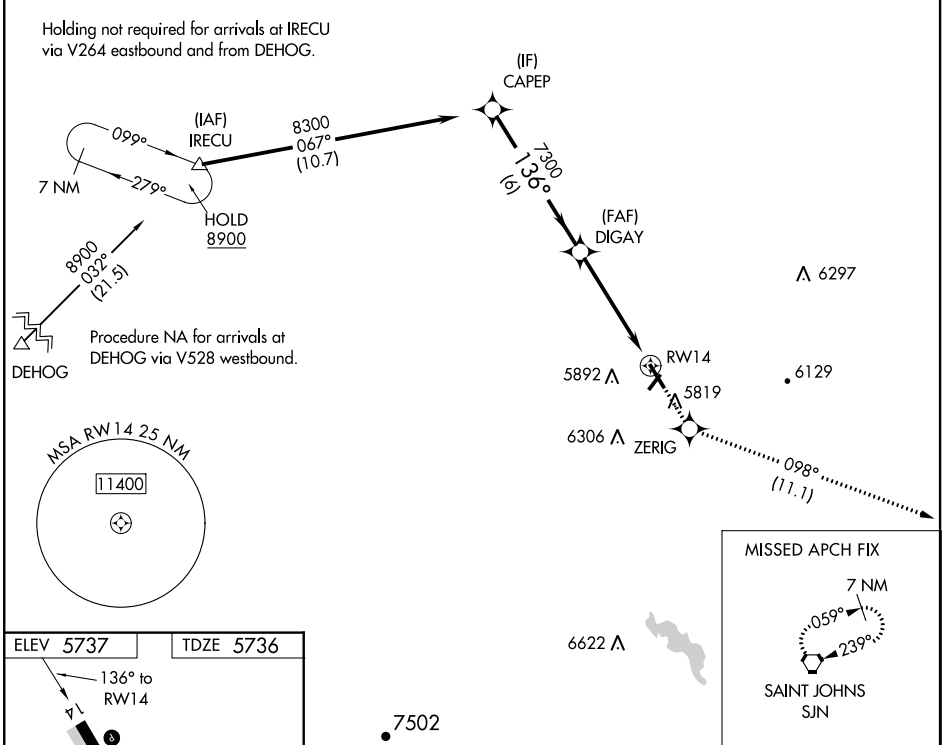
# RNAV (GPS) RWY 14

ST JOHNS INDUSTRIAL AIR PARK (SJJN)

**⚠** Night landing Rwy 3, 32 NA. When local altimeter setting not received, use Show Low altimeter setting and increase all MDA 180 feet. DME/DME RNP-0.3 NA. Helicopter visibility reduction below 3/4 SM NA. VDP NA with Show Low altimeter setting.

MISSED APPROACH: Climb to 9000 direct ZERIG and on track 098° to SJJN VORTAC and hold, continue climb-in-hold to 9000.

ASOS <b>134.225</b>	ALBUQUERQUE CENTER <b>124.325 288.25</b>	UNICOM <b>122.8 (CTAF) 0</b>
------------------------	---	---------------------------------



CATEGORY	A	B	C	D
LP MDA	6140-1	404 (500-1)		NA
LNAV MDA	6140-1	404 (500-1)		NA
CIRCLING	6240-1 503 (600-1)	6280-1 543 (600-1)		NA

SW-4, 21 MAY 2020 to 18 JUN 2020

SW-4, 21 MAY 2020 to 18 JUN 2020