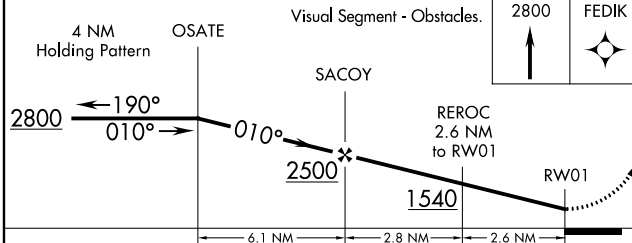
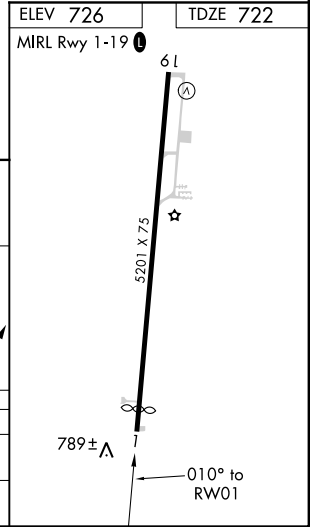
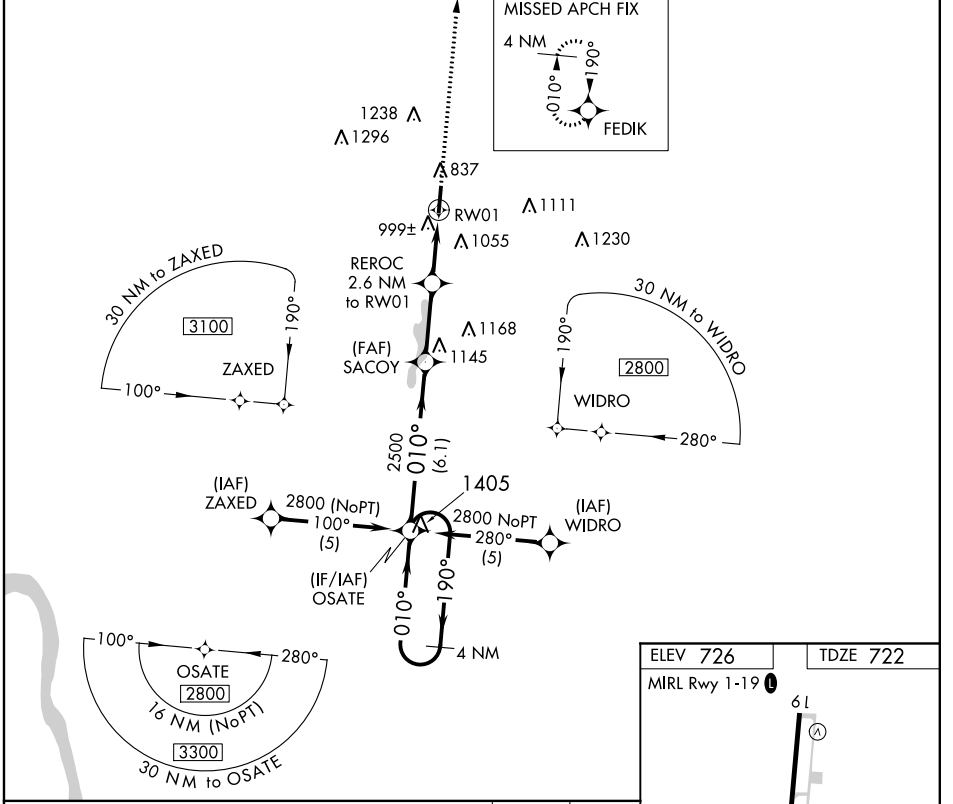


APP CRS 010°	Rwy Idg 4870
	TDZE 722
	Apt Elev 726

RNAV (GPS) RWY 1

JAMES A RHODES (I43)

RNP APCH.		MISSED APPROACH: Climb to 2800 direct FEDIK WP and hold.	
When local altimeter setting not received, use Greater Portsmouth altimeter setting and increase all MDA 60 feet, and increase LNAV Cat C/D and Circling Cat B/C/D visibilities ½ mile. Rwy 1 helicopter visibility reduction below 1 SM NA. Straight-in Rwy 1 NA at night, Circling Rwy 1 NA at night.			
AWOS-3 118.825	HUNTINGTON APP CON 128.4 270.1	UNICOM 122.7 (CTAF) 0	



CATEGORY	A	B	C	D
LNAV MDA	1300-1 578 (600-1)	1300-1½ 578 (600-1½)	1300-1¾ 578 (600-1¾)	1300-2 578 (600-2)
CIRCLING	1340-1 614 (700-1)	1420-1 694 (700-1)	1420-2 694 (700-2)	1420-2½ 694 (700-2½)

EC-2, 21 MAY 2020 to 18 JUN 2020

EC-2, 21 MAY 2020 to 18 JUN 2020