

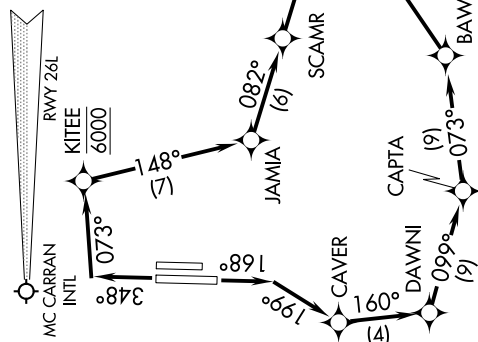
FLAMZ SIX DEPARTURE (RNAV)

AL-6514 (FAA)

**TOP ALTITUDE:
FL190**

ATIS 120.775
GND CON 127.8
HENDERSON TOWER * 125.1 (CTAF)
LAS VEGAS DEP CON 118.4

TAKEOFF MINIMUMS
Rwys 17L, 35R: NA- ATC.
Rwy 17R: Standard with minimum climb of 560' per NM to 5200.
Rwy 35L: Standard with minimum climb of 440' per NM to 4700.



DEPARTURE ROUTE DESCRIPTION

TAKEOFF RUNWAY 17R: Climb heading 168° to intercept course 199° to CAVER, then on track 160° to DAWN, then on track 099° to CAPTA, then on track 073° to BAWLD, then on track 052° to cross ACSIN at or above 13000, thence. . . .

TAKEOFF RUNWAY 35L: Climb heading 348° to intercept course 073° to cross KITEE at 6000, then on track 148° to JAMIA, then on track 082° to SCAMR, then on track 082° to cross ACSIN at or above 13000, thence. . . .

. . . on track 069° to FLAMZ, then on assigned transition. Maintain FL190, expect filed altitude 10 minutes after departure.

FLAGSTAFF TRANSITION (FLAMZ6.FLG)

GALLUP TRANSITION (FLAMZ6.GUP)

WINSLOW TRANSITION (FLAMZ6.INW)

NOTE: GPS required.
NOTE: RNAV 1.
NOTE: For jet aircraft only.



NOTE: Chart not to scale.