

# AC SIN SIX DEPARTURE (RNAV)

SW-4, 21 MAY 2020 to 18 JUN 2020

## DEPARTURE ROUTE DESCRIPTION

**TAKEOFF RUNWAY 17R:** Climb on heading 168° to intercept course 199° to CAVER, then on track 160° to DAWN, then on track 099° to CAPTA, then on track 073° to BAWLD, then on track 052° to cross ACSIN at or above 13000, thence. . . .

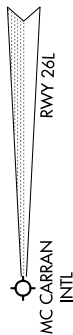
**TAKEOFF RUNWAY 35L:** Climb on heading 348° to intercept course 073° to cross KITEE at 6000, then on track 148° to JAMIA, then on track 082° to SCAMR, then on track 082° to cross ACSIN at or above 13000, thence. . . .

. . . .on assigned transition, maintain FL190, expect filed altitude 10 minutes after departure.

CIRQS TRANSITION (AC SIN6.CIRQS)

DOVE CREEK TRANSITION (AC SIN6.DVC)

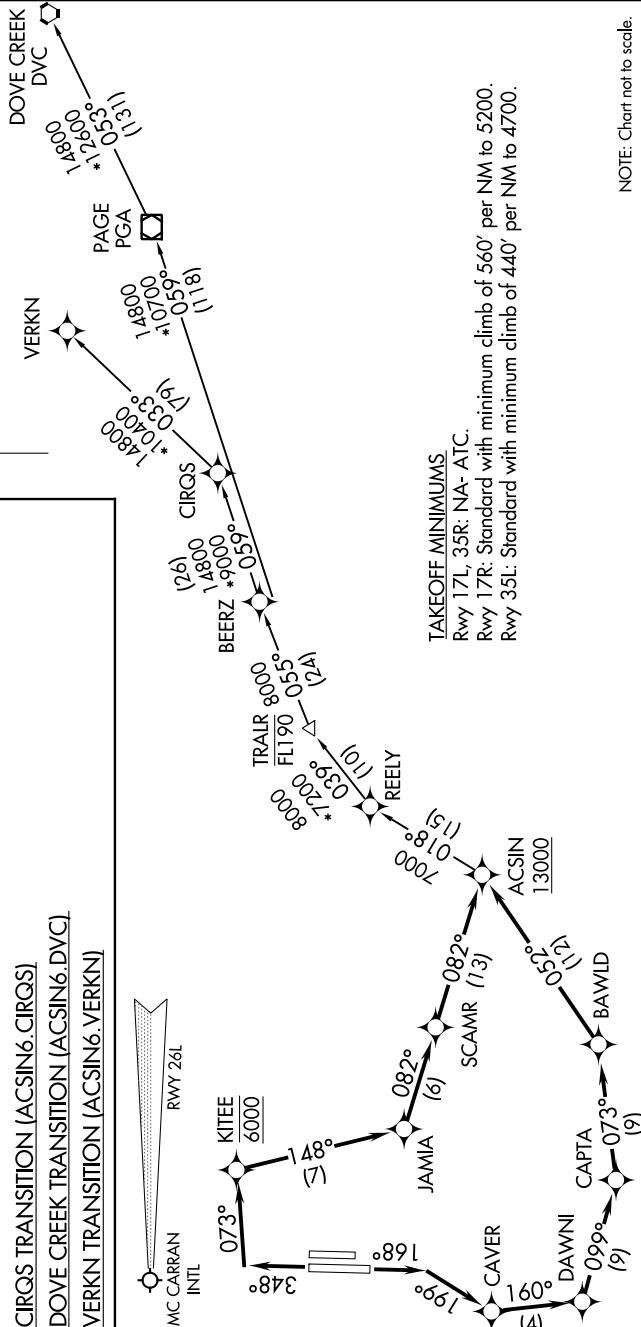
VERKIN TRANSITION (AC SIN6.VERKIN)



**TOP ALTITUDE:**  
FL190

ATIS 120.775  
GND CON 127.8  
HENDERSON TOWER\* 125.1 (CTAF)  
LAS VEGAS DEP CON 118.4

NOTE: GPS required.  
NOTE: RNAV 1.  
NOTE: Do not exceed 200K until leaving 6000.  
NOTE: For Jet aircraft only.



**TAKEOFF MINIMUMS**  
Rwy 17L, 35R: NA- ATC.  
Rwy 17R: Standard with minimum climb of 560' per NM to 5200.  
Rwy 35L: Standard with minimum climb of 440' per NM to 4700.

NOTE: Chart not to scale.

# AC SIN SIX DEPARTURE (RNAV)

SW-4, 21 MAY 2020 to 18 JUN 2020