

VOR/DME RWF <b>113.3</b> Chan <b>80</b>	APP CRS <b>152°</b>	Rwy Idg <b>3402</b> TDZE <b>1073</b> Apt Elev <b>1073</b>
---	------------------------	---

# VOR/DME RWY 13

SPRINGFIELD MUNI (D42)

**⚠** Use Redwood Falls altimeter setting; when not received, use New Ulm altimeter setting. Procedure NA at night. Helicopter visibility reduction below 1 SM not authorized.

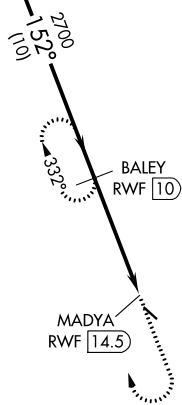
**MISSED APPROACH:** Climb to 2000 then climbing right turn to 2700 on RWF VOR/DME R-152 to BAILEY/RWF 10 DME and hold.

RWF ASOS <b>126.575</b>	MINNEAPOLIS CENTER <b>127.1 290.2</b>	UNICOM <b>122.8 (CTAF) 0</b>
----------------------------	--	---------------------------------

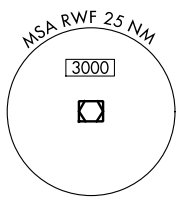
IF/IAF  
REDWOOD FALLS  
113.3 RWF  
Chan 80

Procedure NA for arrival on RWF VOR/DME airway radials 103 CW 195.

△ 1588



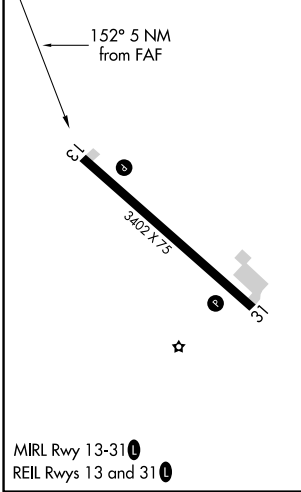
△ 1453



NC-1, 21 MAY 2020 to 18 JUN 2020

NC-1, 21 MAY 2020 to 18 JUN 2020

ELEV 1073	TDZE 1073
-----------	-----------



MIRL Rwy 13-31  
REIL Rwy 13 and 31

VGSI and descent angles not coincident (VGSI Angle 3.00/TCH 20).

RWF VOR/DME	BAILEY RWF 10	MADYA RWF 14.5		
2700	2700			
10 NM	4.5 NM	0.5 NM		
152°	3.01° TCH 40			
2000	2700	BAILEY RWF 10		
		RWF R-152		
CATEGORY	A	B	C	D
S-13	1620-1	547 (600-1)	1620-1 5/8 547 (600-1 5/8)	NA
CIRCLING	1660-1	587 (600-1)	1820-2 1/4 747 (800-2 1/4)	NA