

(CRIED9.CRIED) 18032

CRIED NINE DEPARTURE

AL-6453 (FAA)

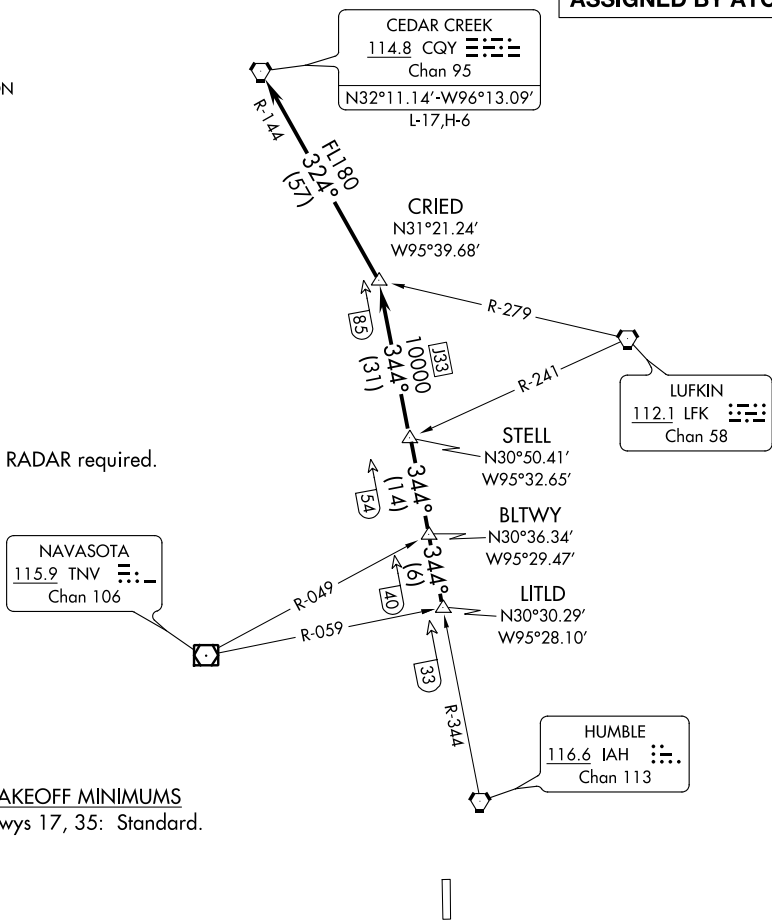
TEXAS GULF COAST RGNL (L,B,X)
ANGLETON/LAKE JACKSON, TEXAS

ASOS
119.925
CLNC DEL
125.2
CTAF
123.0
HOUSTON DEP CON
134.45 284.0

**TOP ALTITUDE:
ASSIGNED BY ATC**

NOTE: RADAR required.

TAKEOFF MINIMUMS
Rwys 17, 35: Standard.



NOTE: Chart not to scale.

DEPARTURE ROUTE DESCRIPTION

TAKEOFF ALL RUNWAYS: When entering controlled airspace, climb on assigned heading for RADAR vectors to LITLD INT. Maintain ATC assigned altitude. Expect filed altitude 10 minutes after departure, thence . . .

. . . on IAH R-344 to STELL INT, then on IAH R-344 to CRIED INT then left turn on CQY R-144 to CQY VORTAC.

CRIED NINE DEPARTURE
(CRIED9.CRIED) 22JUN17

ANGLETON/LAKE JACKSON, TEXAS
TEXAS GULF COAST RGNL (L,B,X)

SC-5, 21 MAY 2020 to 18 JUN 2020

SC-5, 21 MAY 2020 to 18 JUN 2020