

WAAS CH <b>86539</b> <b>W25A</b>	APP CRS <b>253°</b>	Rwy Idg TDZE Apt Elev	<b>6501</b> <b>5140</b> <b>5176</b>
--	------------------------	-----------------------------	---

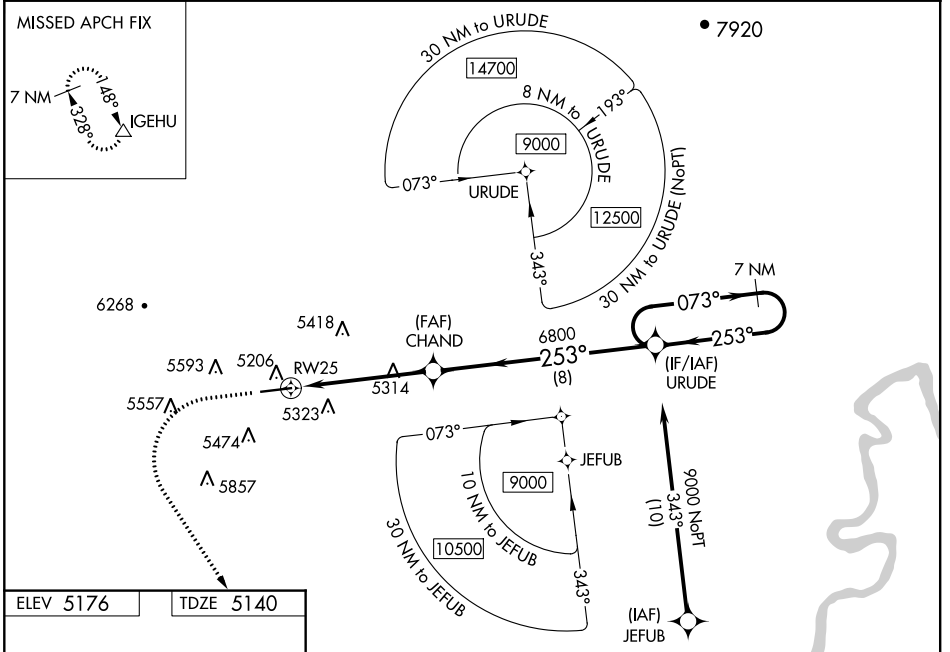
# RNAV (GPS) RWY 25

ROOSEVELT MUNI (74V)

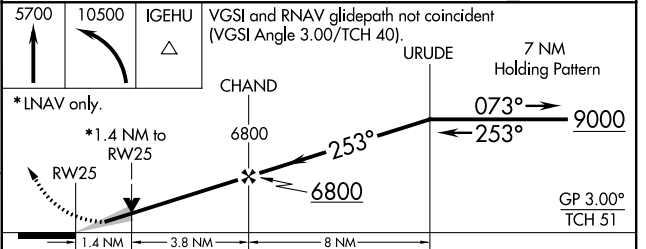
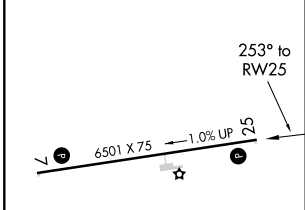
**NA** For uncompensated Baro-VNAV systems, LNAV/VNAV NA below -25°C (-13°F) or above 48°C (119°F). Baro-VNAV and VDP NA when using Vernal altimeter setting. DME/DME RNP-0.3 NA. When local altimeter setting not received, use Vernal altimeter setting; increase LPV DA to 5466 and visibility 1/8 SM, LNAV/VNAV DA to 5628 and visibility 1/4 SM; increase all MDAs 80 feet and LNAV visibility Cat C and D 1/8 SM and Circling Cat C visibility 1/4 SM.

**MISSED APPROACH:** Climb to 5700 then climbing left turn to 10500 direct IGEHU and hold, continue climb-in-hold to 10500.

AWOS-3P <b>118.975</b>	SALT LAKE CENTER <b>135.77 257.7</b>	UNICOM <b>122.8 (CTAF)</b>
---------------------------	---	-------------------------------



ELEV 5176	TDZE 5140
-----------	-----------



CATEGORY	A	B	C	D
LPV DA	5390-1 250 (300-1)			
LNAV/VNAV DA	5552-1½ 412 (400-1½)			
LNAV MDA	5580-1 440 (500-1)		5580-1¼ 440 (500-1¼)	
<b>CIRCLING</b>	5740-1 564 (600-1)	5900-1 724 (800-1)	6020-2½ 844 (900-2½)	6340-3 1164 (1200-3)

SW-4, 21 MAY 2020 to 18 JUN 2020

SW-4, 21 MAY 2020 to 18 JUN 2020