

WAAS CH <b>65720</b> <b>W15A</b>	APP CRS <b>152°</b>	Rwy Idg <b>5100</b> TDZE <b>58</b> Apt Elev <b>58</b>
----------------------------------------	------------------------	-------------------------------------------------------------

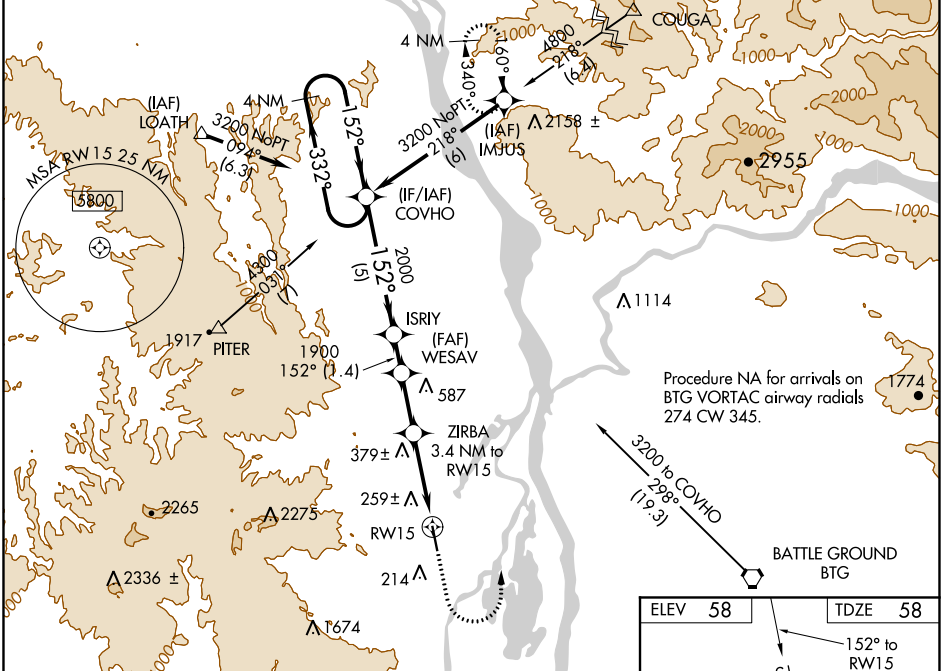
# RNAV (GPS) RWY 15

SCAPPOOSE INDUSTRIAL AIRPARK (SPB)

**⚠** Circling NA west of Rwy 15-33. DME/DME RNP-0.3 NA. Helicopter visibility reduction below 1 SM NA.  
**⚠** When VGSI inop, Straight in and Circling to Rwy 15 NA at night. When local altimeter setting not received, use Portland Intl altimeter setting and increase all DA/MDA 40 feet and increase LNAV/VNAV all Cats visibility 1/8 mile. Baro-VNAV NA when using Portland Intl altimeter setting. For uncompensated Baro-VNAV systems, LNAV/VNAV NA below -15°C (5°F) or above 42°C (107°F).

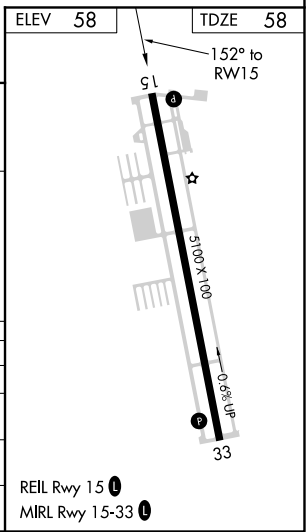
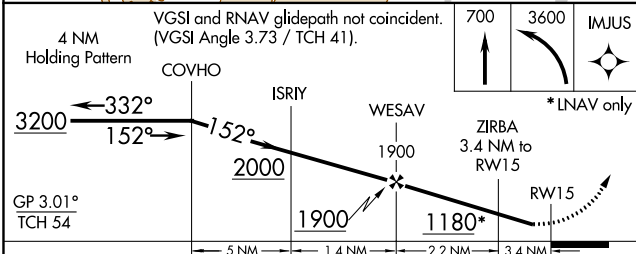
**MISSED APPROACH:** Climb to 700 then climbing left turn to 3600 direct IMJUS and hold.

ASOS <b>135.875</b>	PORTLAND APP CON <b>124.35 299.2</b>	CLNC DEL <b>121.65</b>	UNICOM <b>122.8</b> (CTAF) <b>0</b>
------------------------	-----------------------------------------	---------------------------	----------------------------------------



NW-1, 21 MAY 2020 to 18 JUN 2020

NW-1, 21 MAY 2020 to 18 JUN 2020



CATEGORY	A	B	C	D
LPV DA		350-1	292 (300-1)	
LNAV/VNAV DA		580-1 <sup>3</sup> / <sub>4</sub>	522 (600-1 <sup>3</sup> / <sub>4</sub> )	
LNAV MDA	640-1	582 (600-1)	640-1 <sup>3</sup> / <sub>4</sub>	582 (600-1 <sup>3</sup> / <sub>4</sub> )
CIRCLING	640-1	582 (600-1)	640-1 <sup>3</sup> / <sub>4</sub>	640-2
			582 (600-1 <sup>3</sup> / <sub>4</sub> )	582 (600-2)