

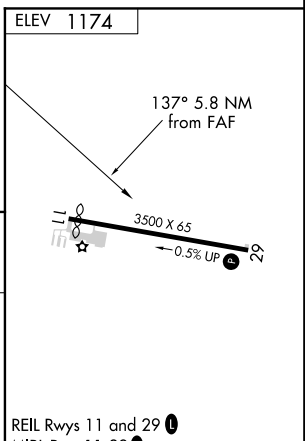
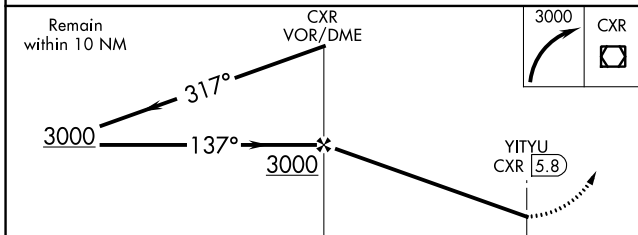
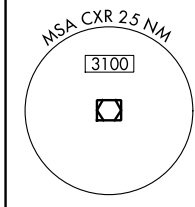
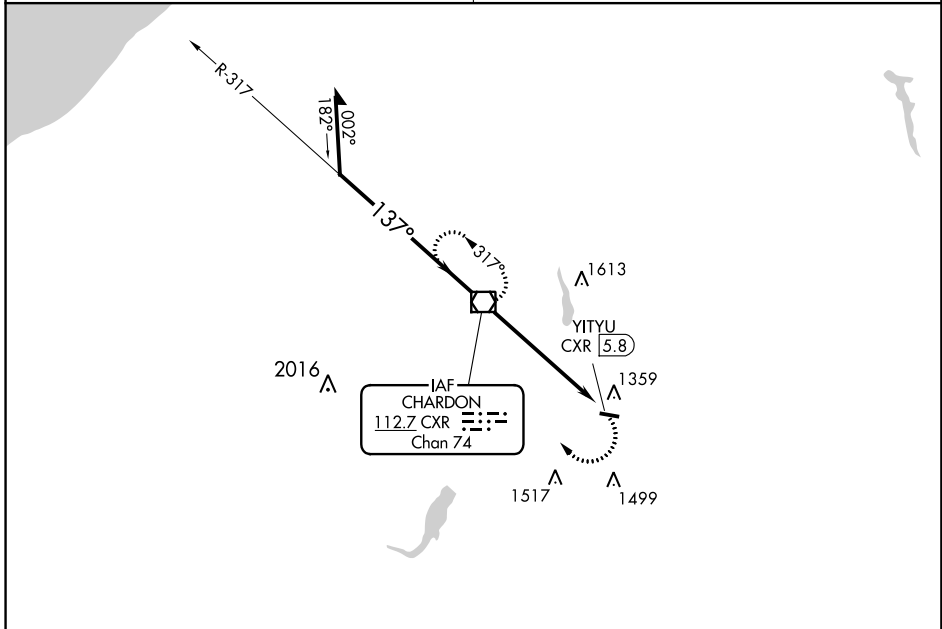
VOR/DME CXR 112.7 Chan 74	APP CRS 137°	Rwy Idg TDZE Apt Elev	N/A N/A 1174
---	------------------------	-----------------------------	---

VOR-A
GEAUGA COUNTY (7G8)

NA Use Youngstown-Warren altimeter setting; when not received use Cuyahoga County altimeter setting and increase all MDA 40 feet and increase Circling Cat C visibility ¼ mile. Procedure NA at night. Helicopter visibility reduction below 1 SM not authorized.

MISSED APPROACH:
Climbing right turn to 3000
direct CXR VOR/DME and hold.

CLEVELAND APP CON 125.35 346.325	UNICOM 123.0 (CTAF)
---	--------------------------------------



CATEGORY	A	B	C	D	FAF to MAP 5.8 NM					
	1880-1	706 (800-1)	1900-2	NA	Knots	60	90	120	150	180
CIRCLING	1880-1 706 (800-1) 1900-2 726 (800-2) NA				Min:Sec	5:48	3:52	2:54	2:19	1:56

EC-2, 21 MAY 2020 to 18 JUN 2020

EC-2, 21 MAY 2020 to 18 JUN 2020