

WAAS CH <b>61233</b> <b>W29A</b>	APP CRS <b>289°</b>	Rwy Idg TDZE <b>1167</b> Apt Elev <b>1174</b>	<b>3500</b> <b>1167</b> <b>1174</b>
--	------------------------	---	---

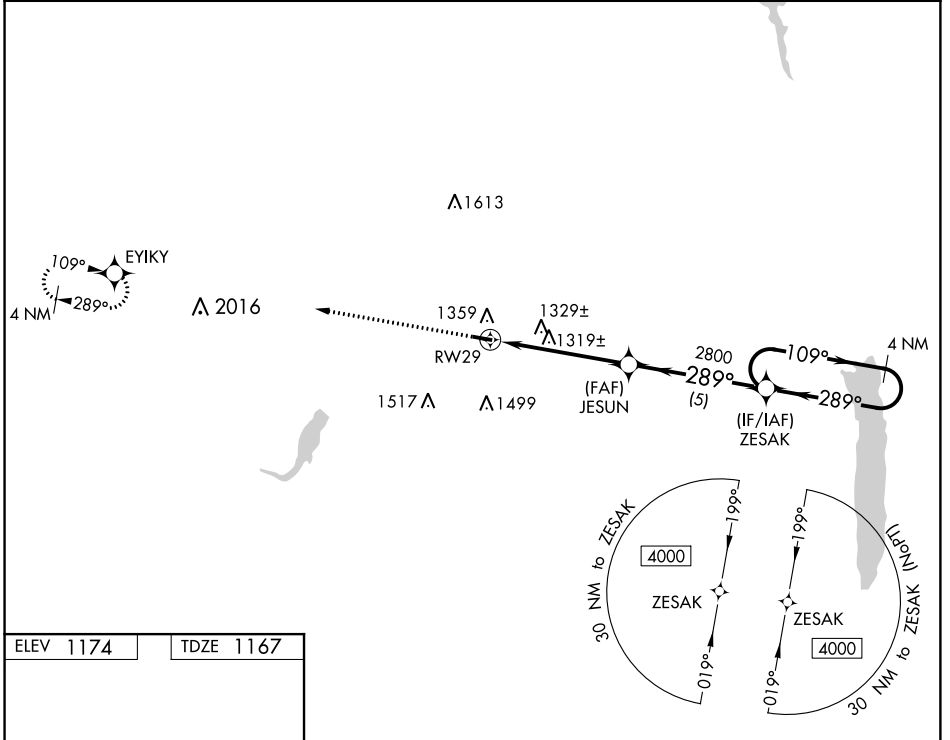
# RNAV (GPS) RWY 29

GEAUGA COUNTY (7G8)

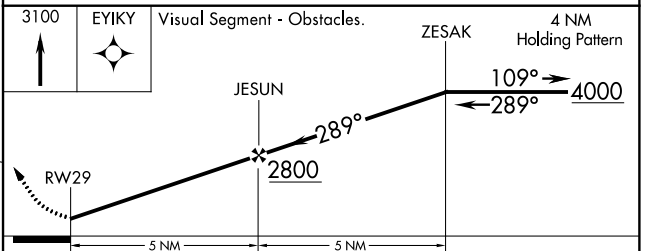
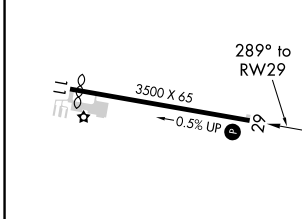
**NA** DME/DME RNP-0.3 NA. Use Youngstown-Warren altimeter setting; when not received use Cuyahoga County altimeter setting and increase all MDA 40 feet and increase LNAV Cat C visibility 1/8 mile and Circling Cat C visibility 1/4 mile. Procedure NA at night. Helicopter visibility reduction below 1 SM NA.

**MISSED APPROACH:** Climb to 3100 direct EYIKY and hold.

CLEVELAND APP CON <b>125.35 346.325</b>	UNICOM <b>123.0 (CTAF) 0</b>
--	---------------------------------



ELEV <b>1174</b>	TDZE <b>1167</b>
------------------	------------------



CATEGORY	A	B	C	D
LP MDA	1620-1	453 (500-1)	1620-1 <sup>3</sup> / <sub>8</sub> 453 (500-1 <sup>3</sup> / <sub>8</sub> )	NA
LNAV MDA	1640-1	473 (500-1)	1640-1 <sup>3</sup> / <sub>8</sub> 473 (500-1 <sup>3</sup> / <sub>8</sub> )	NA
<b>C</b> CIRCLING	1760-1	586 (600-1)	1900-2 726 (800-2)	NA

REIL Rwy 11 and 29 **0**  
MIRL Rwy 11-29 **0**

EC-2, 21 MAY 2020 to 18 JUN 2020

EC-2, 21 MAY 2020 to 18 JUN 2020