

WAAS CH 99531	APP CRS 048°	Rwy Idg TDZE Apt Elev	3643 1031 1031
W05A			

RNAV (GPS) RWY 5

MONROE COUNTY (MNV)

RNP APCH.

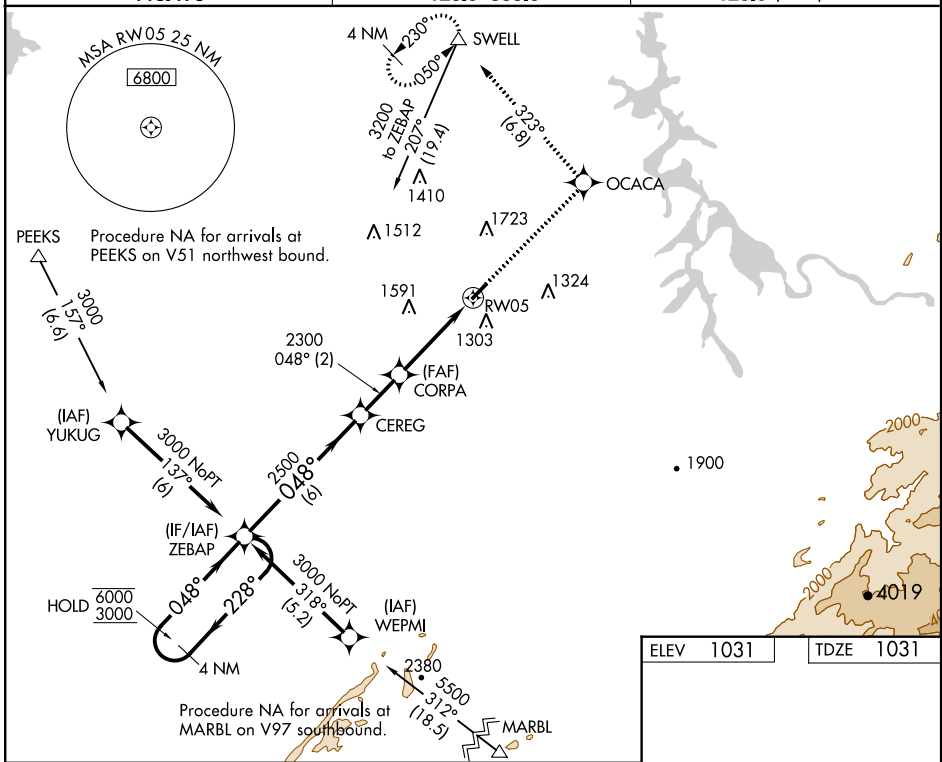
NA Circling NA NW of Rwy 5-23. Procedure NA at night. Rwy 5 helicopter visibility reduction below 1 SM NA. For uncompensated Baro-VNAV systems, LNAV/VNAV NA below -17°C or above 54°C.

MISSED APPROACH:
Climb to 3200 direct OCACA and track 323° to SWELL and hold.

AWOS-3
118.475

KNOXVILLE APP CON
123.9 353.6

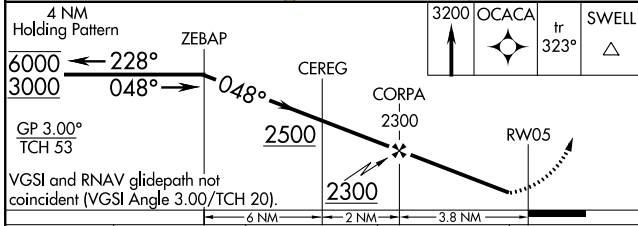
UNICOM
123.0 (CTAF)



SE-1, 21 MAY 2020 to 18 JUN 2020

SE-1, 21 MAY 2020 to 18 JUN 2020

ELEV 1031	TDZE 1031
-----------	-----------



CATEGORY	A	B	C	D
LPV DA	1395-1 ¹ / ₈	364 (400-1 ¹ / ₈)		NA
LNAV/VNAV DA	1538-1 ³ / ₄	507 (600-1 ³ / ₄)		NA
LNAV MDA	1680-1	649 (700-1)	1680-1 ⁷ / ₈ 649 (700-1 ⁷ / ₈)	NA
CIRCLING	1680-1	649 (700-1)	1680-2 649 (700-2)	NA

