

WAAS CH 40227 W11A	APP CRS 114°	Rwy Idg TDZE Apt Elev	5000 191 195
--	------------------------	-----------------------------	---

RNAV (GPS) RWY 11

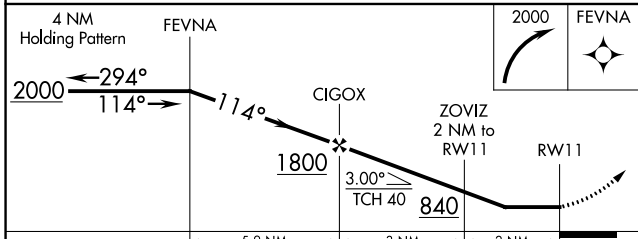
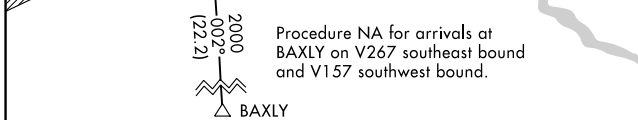
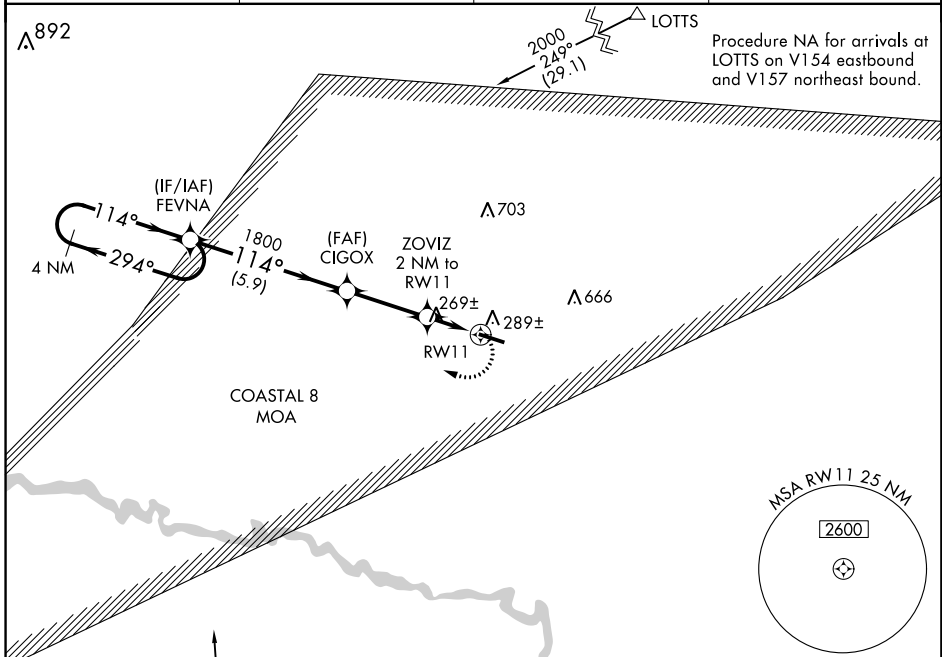
SWINTON SMITH FIELD AT REIDSVILLE MUNI (R.VJ)

⚠ DME/DME RNP-0.3 NA. Procedure NA at night. Helicopter visibility reduction below 1 SM not authorized. Use Vidalia altimeter setting, when not received, use Alma altimeter setting and increase all MDA 60 feet; increase LP Cat C visibility ¼ mile and LNAV Cat C visibility ½ mile.

⚠ NA

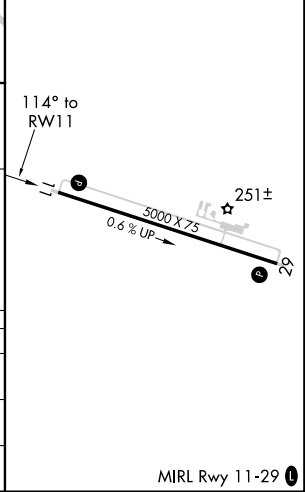
MISSED APPROACH:
Climbing right turn to 2000
direct FEVNA and hold.

AWOS-3PT 128.325	VDI AWOS-3 119.925	JACKSONVILLE CENTER 127.575 269.025	CTAF 122.9
----------------------------	------------------------------	---	----------------------



ELEV 195	TDZE 191
----------	----------

CATEGORY	A	B	C	D
LP MDA	580-1	389 (400-1)	580-1½ 389 (400-1½)	NA
LNAV MDA	600-1	409 (500-1)	600-1¼ 409 (500-1¼)	NA
CIRCLING	680-1	485 (500-1)	680-1½ 485 (500-1½)	NA



MIRL Rwy 11-29

SE-4, 21 MAY 2020 to 18 JUN 2020

SE-4, 21 MAY 2020 to 18 JUN 2020