

WAAS CH <b>86735</b> W36A	APP CRS <b>001°</b>	Rwy Idg 6000 TDZE 401 Apt Elev 402
---------------------------------	------------------------	---

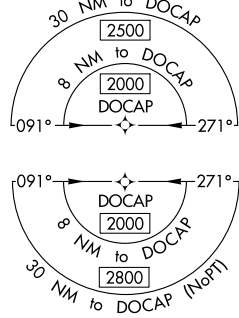
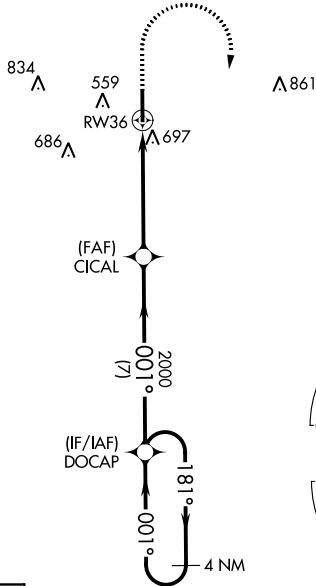
# RNAV (GPS) RWY 36

OLIVE BRANCH (OLV)

**⚠** For uncompensated Baro-VNAV systems, LNAV/VNAV NA below -15°C (5°F) or above 54°C (130°F). DME/DME RNP-0.3 NA. When local altimeter setting not received, use Memphis Intl altimeter setting and increase all DA 32 feet and all MDA 40 feet; increase LPV and LNAV/VNAV all Cats and LNAV Cats C and D and Circling Cats C and D visibility ¼ mile. VDP and Baro-VNAV NA with Memphis Intl altimeter setting. Rwy 36 helicopter visibility reduction below ¾ SM NA.

**MISSED APPROACH:** Climb to 1500 then climbing right turn to 2000 direct DOCAP and hold.

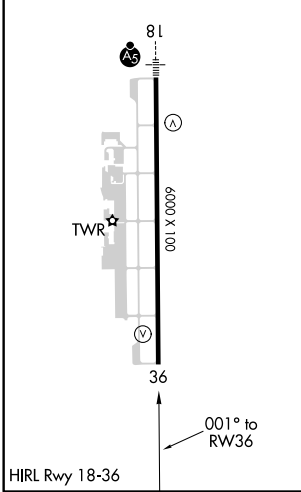
ATIS <b>119.925</b>	MEMPHIS APP CON <b>125.8 338.3</b>	OLIVE BRANCH TOWER ★ <b>125.275 (CTAF) 0</b>	GND CON <b>121.2</b>	CLNC DEL <b>121.2</b>	CLNC DEL <b>121.3</b> (When twr closed)	UNICOM <b>122.95</b>
------------------------	---------------------------------------	---	-------------------------	--------------------------	---	-------------------------



SC-4, 21 MAY 2020 to 18 JUN 2020

SC-4, 21 MAY 2020 to 18 JUN 2020

ELEV <b>402</b>	TDZE <b>401</b>
-----------------	-----------------



1500	2000	DOCAP	VGSi and RNAV glidepath not coincident (VGSi Angle 3.00/TCH 31).			
*LNAV only		*1.8 NM to RW36	CICAL 2000	DOCAP	4 NM Holding Pattern	
RW36		1.8 NM	3.1 NM	7 NM	181° → 2000	← 001°
				GP 3.00° TCH 45		
CATEGORY	A	B	C	D		
LPV DA	709-1		308 (400-1)			
LNAV/VNAV DA	915-1¾		514 (600-1¾)			
LNAV MDA	1000-1	599 (600-1)	1000-1¾	599 (600-1¾)		
<b>C</b> CIRCLING	1060-1	658 (700-1)	1060-1¾	1200-2½	798 (800-2½)	