


LOC/DME I-OLV 109.3 Chan 30	APP CRS 181°	Rwy Idg TDZE Apt Elev	6000 402 402
--	------------------------	-----------------------------	---

ILS or LOC RWY 18

OLIVE BRANCH (OLV)

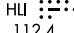
⚠ When local altimeter setting not received, use Memphis Intl altimeter setting and increase all DA 32 feet and all MDA 40 feet; increase S-LOC 18 Cats C and D visibility 1/8 mile and Circling Cats C and D visibility 1/4 mile; increase WIMUB fix minimums Circling Cats C and D visibility 1/4 mile.

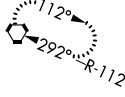
MALSR


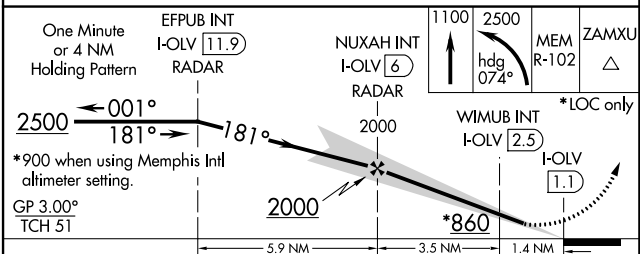
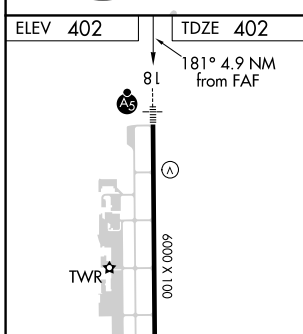
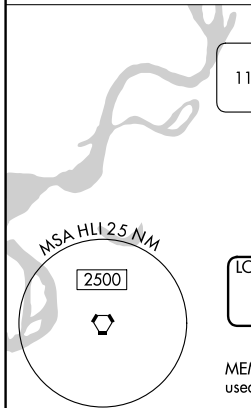
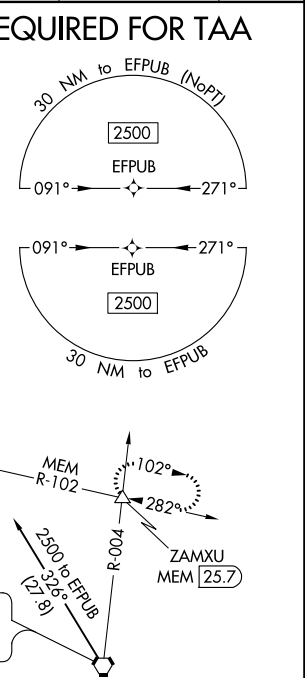
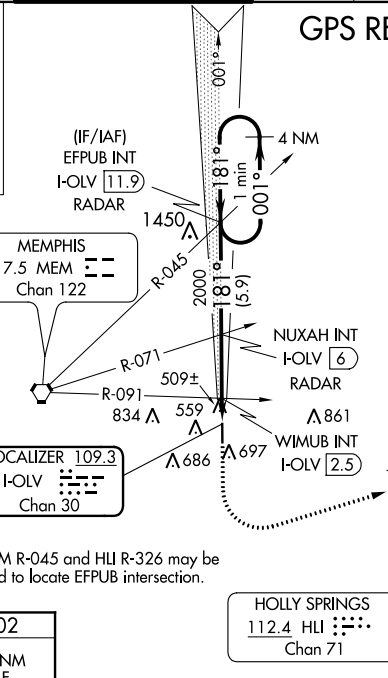
MISSED APPROACH: Climb to 1100 then climbing left turn to 2500 on heading 074° and on MEM VORTAC R-102 to ZAMXU INT/MEM 25.7 DME and hold.

ATIS 119.925	MEMPHIS APP CON 125.8 338.3	OLIVE BRANCH TOWER * 125.275 (CTAF) 0	GND CON 121.2	CLNC DEL 121.2	CLNC DEL 121.3 (When twr closed)	UNICOM 122.95
------------------------	---------------------------------------	---	-------------------------	--------------------------	---	-------------------------

ALTERNATE MISSED APCH FIX

HOLLY SPRINGS
HLI 
112.4
Chan 71





CATEGORY	A	B	C	D
S-ILS 18	602-1/2 200 (200-1/2)			
S-LOC 18	860-1/2 458 (500-1/2)	860-7/8 458 (500-7/8)		
C CIRCLING	1060-1 658 (700-1)	1060-1 3/4 658 (700-1 3/4)	1200-2 1/2 798 (800-2 1/2)	
WIMUB FIX MINIMUMS (DUAL VOR RECEIVERS OR DME REQUIRED)				
S-LOC 18	760-1/2 358 (400-1/2)	760-5/8 358 (400-5/8)		
C CIRCLING	1060-1 658 (700-1)	1060-1 3/4 658 (700-1 3/4)	1200-2 1/2 798 (800-2 1/2)	

SC-4, 21 MAY 2020 to 18 JUN 2020

SC-4, 21 MAY 2020 to 18 JUN 2020