

WAAS CH <b>42635</b> W20A	APP CRS <b>198°</b>	Rwy Idg TDZE Apt Elev	<b>5000</b> <b>262</b> <b>262</b>
---------------------------------	------------------------	-----------------------------	---

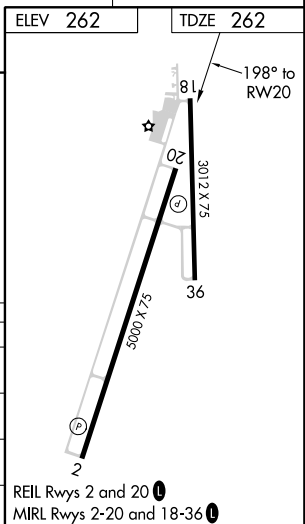
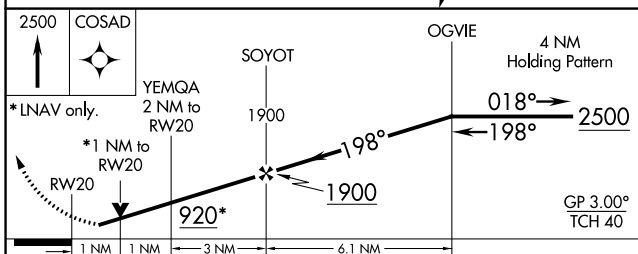
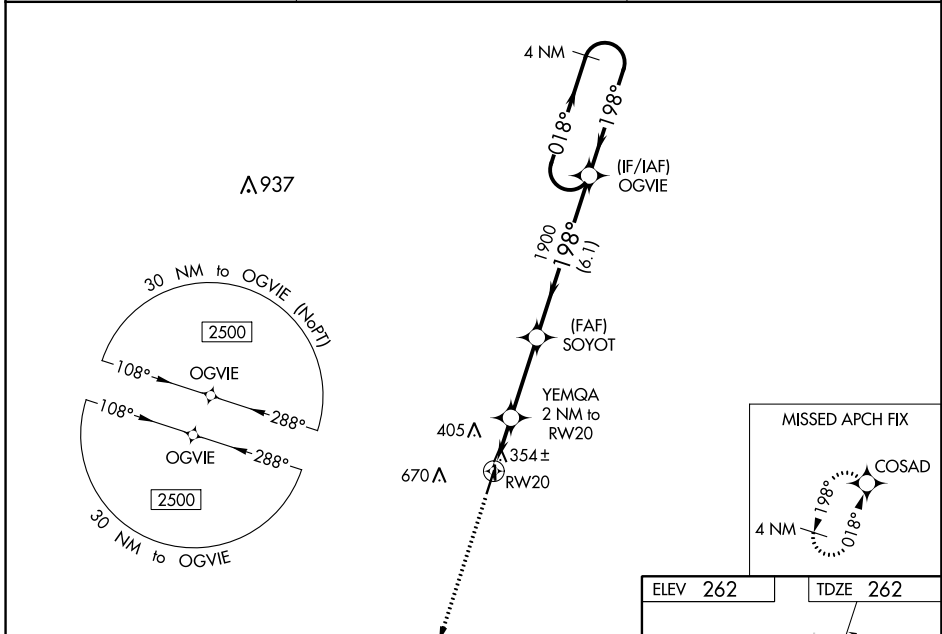
# RNAV (GPS) RWY 20

KENNETT MEMORIAL (TKX)

**∇** Circling to Rwy 18/36 NA at night. For uncompensated Baro-VNAV systems, LNAV/VNAV NA below -16°C (4°F) or above 54°C (130°F). Circling NA west of Rwys 2 and 18.  
**Δ** NA DME/DME RNP-0.3 NA. When local altimeter setting not received, use Blytheville altimeter setting and increase all DA 47 feet and all MDA 60 feet; increase LPV visibility ¼ mile all Cats; increase LNAV/VNAV visibility ¼ mile all Cats; increase LNAV Cat C/D and Circling Cat D visibility ¼ mile. Helicopter visibility reduction below ¾ SM NA. VDP and Baro-VNAV NA when using Blytheville Muni altimeter setting.

MISSED APPROACH: Climb to 2500 direct COSAD and hold.

AWOS-3PT <b>119.05</b>	MEMPHIS CENTER <b>120.075 289.4</b>	UNICOM <b>122.8 (CTAF) 0</b>
---------------------------	--	---------------------------------



CATEGORY	A	B	C	D
LPV DA		554-1	292 (300-1)	
LNAV/VNAV DA		602-1½	340 (400-1½)	
LNAV MDA		620-1	358 (400-1)	
<b>C</b> CIRCLING	660-1 398 (400-1)	720-1 458 (500-1)	720-1½ 458 (500-1½)	900-2 638 (700-2)

REIL Rwys 2 and 20 **0**  
 MIRL Rwys 2-20 and 18-36 **0**

NC-3, 21 MAY 2020 to 18 JUN 2020

NC-3, 21 MAY 2020 to 18 JUN 2020