

WAAS CH <b>42900</b> <b>W33A</b>	APP CRS <b>333°</b>	Rwy Idg TDZE <b>82</b> Apt Elev <b>82</b>
--	------------------------	---

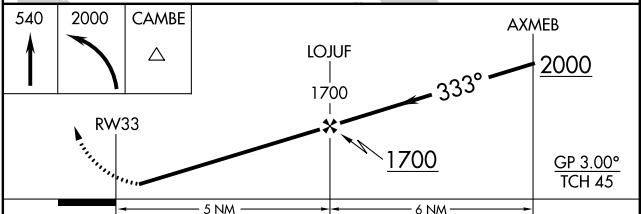
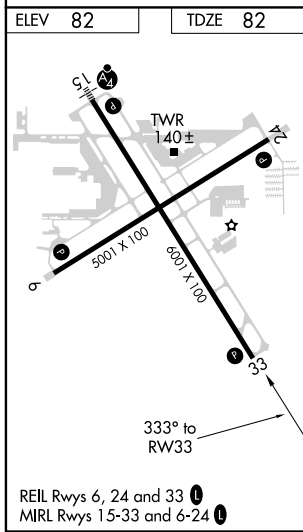
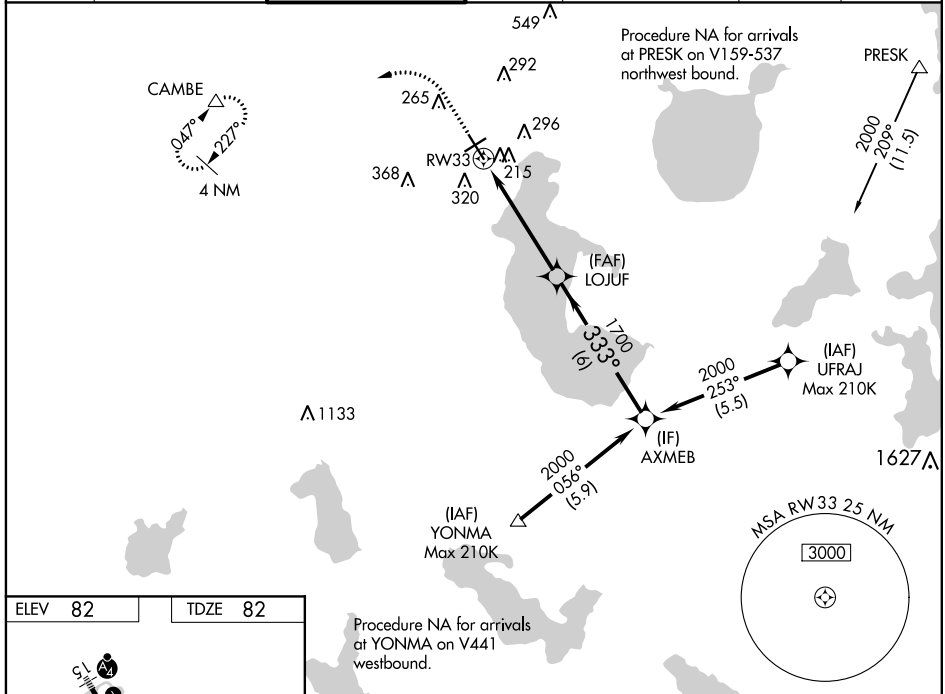
# RNAV (GPS) RWY 33

KISSIMMEE GATEWAY (ISM)

**⚠** Baro-VNAV NA when using Orlando Intl altimeter setting. For uncompensated Baro-VNAV systems, LNAV/VNAV NA below -15°C (5°F) or above 43°C (109°F). Helicopter visibility reduction below 3/4 SM NA. DME/DME RNP-0.3 NA. When local altimeter setting not received, use Orlando Intl altimeter setting and increase all DA 27 feet and all MDA 40 feet. Increase LNAV/VNAV all Cats visibility 1/8 mile and LNAV Cats C/D 1/4 mile.

**MISSED APPROACH:**  
Climb to 540 then climbing left turn to 2000 direct CAMBE and hold.

ATIS <b>128.775</b>	ORLANDO APP CON <b>119.4 351.9</b>	KISSIMMEE TOWER ★ <b>124.45 (CTAF) 0</b>	CLNC DEL <b>121.7</b>	CLNC DEL <b>119.95</b> (when twr closed)	GND CON <b>121.7</b>	UNICOM <b>122.95</b>
------------------------	---------------------------------------	---	--------------------------	--	-------------------------	-------------------------



CATEGORY	A	B	C	D
LPV DA		332-1	250 (300-1)	
LNAV/VNAV DA		402-1	320 (400-1)	
LNAV MDA	480-1	398 (400-1)	480-1 1/8	398 (400-1 1/8)
CIRCLING	620-1	538 (600-1)	620-1 1/2	640-2
			538 (600-1 1/2)	558 (600-2)

SE-3, 21 MAY 2020 to 18 JUN 2020

SE-3, 21 MAY 2020 to 18 JUN 2020