

ECHOO ONE DEPARTURE (RNAV)

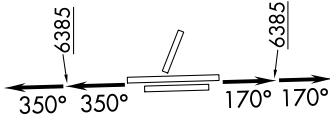
AL-5715 (FAA)

CENTENNIAL (APA)
DENVER, COLORADO

SW-1, 21 MAY 2020 to 18 JUN 2020

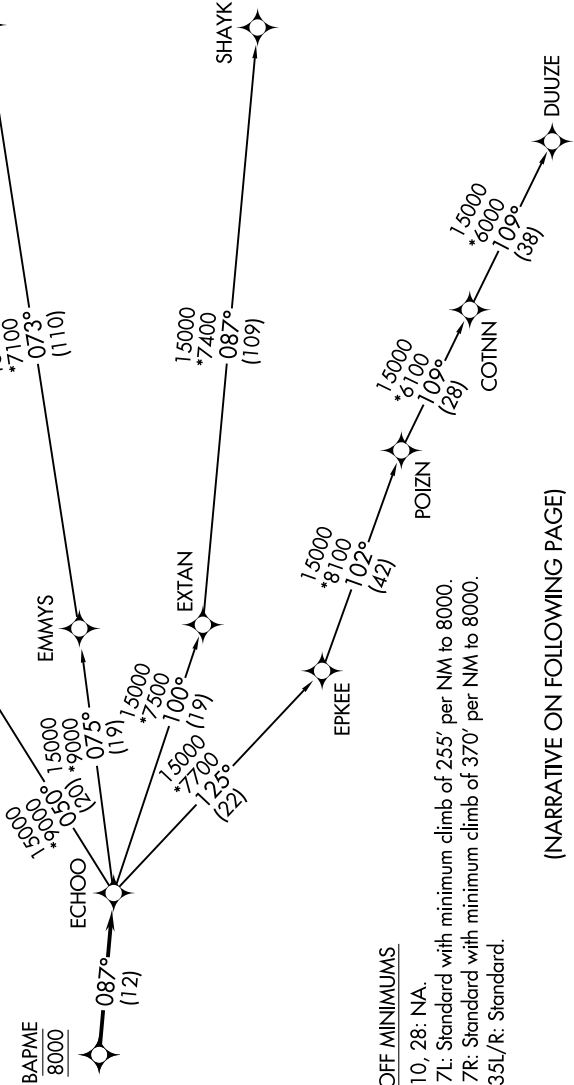
TOP ALTITUDE:
FL230

- NOTE: DME/DME/IRU or GPS required.
- NOTE: RNAV 1.
- NOTE: Turbojets only.
- NOTE: RADAR required.
- NOTE: Accelerate to 250K or greater upon reaching 10000.
- NOTE: If slower speed is required to meet crossing restrictions advise CLNC DEL prior to taxi.



TAKEOFF MINIMUMS
 Rwy 10, 28: NA.
 Rwy 17L: Standard with minimum climb of 255' per NM to 8000.
 Rwy 17R: Standard with minimum climb of 370' per NM to 8000.
 Rwy 35L/R: Standard.

ATIS
120.3
CLNC DEL
128.6
DENVER DEP COIN
132.75 269.3
WYNM



(NARRATIVE ON FOLLOWING PAGE)

SW-1, 21 MAY 2020 to 18 JUN 2020

ECHOO ONE DEPARTURE (RNAV)

DENVER, COLORADO
CENTENNIAL (APA)

NOTE: Chart not to scale.