

VORTAC EIC <b>117.4</b> Chan <b>121</b>	APP CRS <b>291°</b>	Rwy Idg TDZE Apt Elev	<b>N/A</b> <b>N/A</b> <b>260</b>
---	------------------------	-----------------------------	--

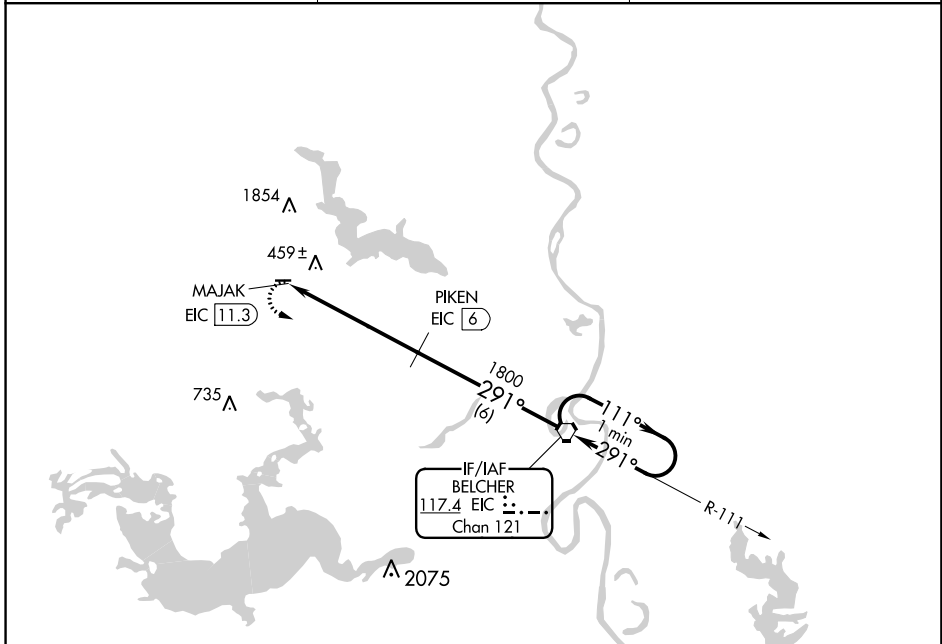
# VOR/DME-A

VIVIAN (3F4)

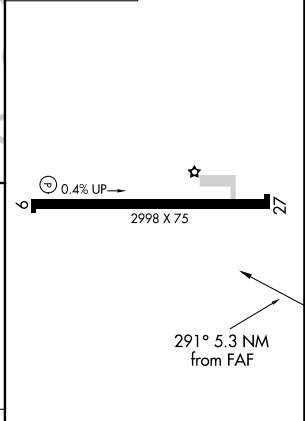
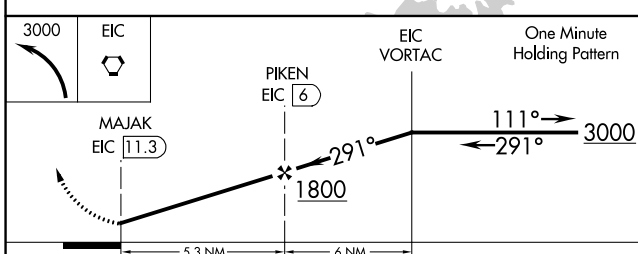
**⚠** Circling NA north of Rwy 9-27. Use Shreveport Rgnl altimeter setting; when not received, use Shreveport Downtown altimeter setting. Procedure NA at night. Helicopter visibility reduction below 1 SM NA.

**⚠** MISSED APPROACH: Climbing left turn to 3000 direct EIC VORTAC and hold.

SHREVEPORT APP CON <b>119.9 335.55</b>	GCO <b>135.075</b>	UNICOM <b>122.8 (CTAF) 0</b>
---	-----------------------	---------------------------------



ELEV 260



CATEGORY	A	B	C	D	MIRL Rwy 9-27 0
CIRCLING	860-1	600 (600-1)	880-1 3/4 620 (700-1 3/4)	NA	REIL Rwy 9 0
					REIL Rwy 27