

APP CRS	Rwy Idg	2998
268°	TDZE	260
	Apt Elev	260

RNAV (GPS) RWY 27

VIVIAN (3F4)

RNP APCH.

▽ Use Shreveport Rgnl altimeter setting; when not received, use Shreveport Downtown altimeter setting. Procedure NA at night. Rwy 27 helicopter visibility reduction below 1 SM NA.

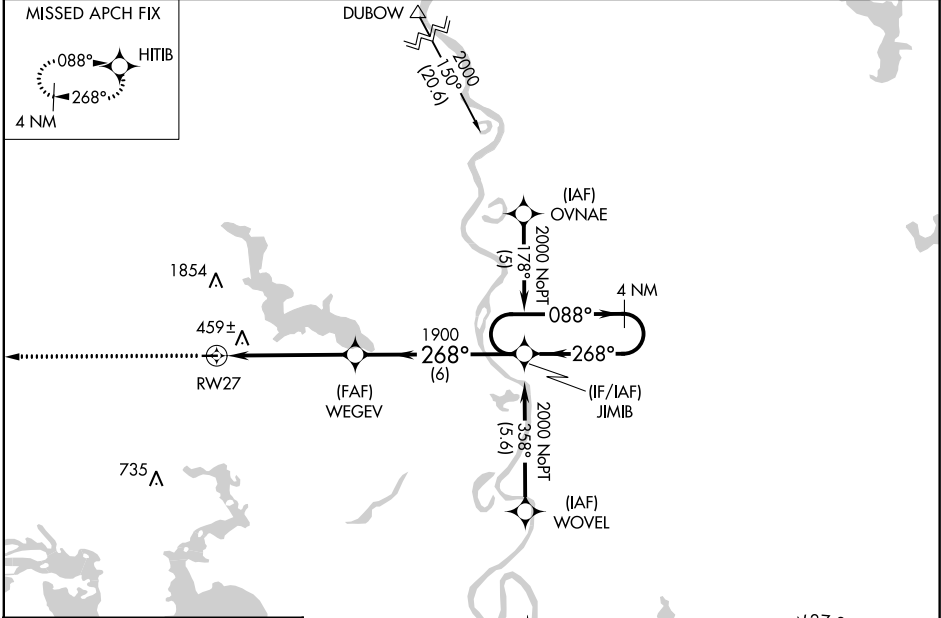
△ NA

MISSED APPROACH: Climb to 2000 direct HITIB and hold.

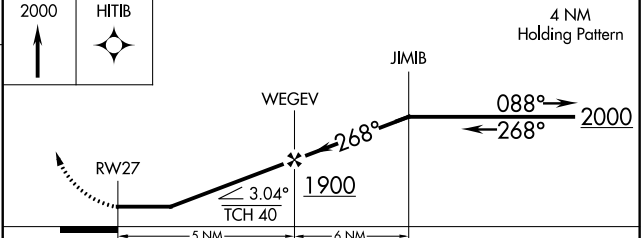
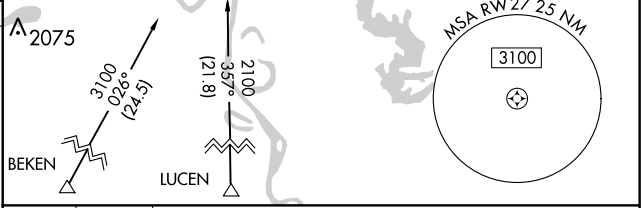
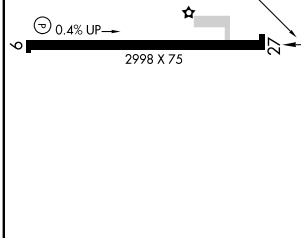
SHREVEPORT APP CON
119.9 335.55

GCO
135.075

UNICOM
122.8 (CTAF) 0



ELEV 260	TDZE 260
----------	----------



MIRL Rwy 9-27 0				
REIL Rwy 9 0				
REIL Rwy 27				
CATEGORY	A	B	C	D
LNAV MDA	860-1	600 (600-1)	860-1¾ 600 (600-1¾)	NA

SC-4, 21 MAY 2020 to 18 JUN 2020

SC-4, 21 MAY 2020 to 18 JUN 2020