

VOR/DME HUT 116.8 Chan 115	APP CRS 025°	Rwy Idg 5502 TDZE 1497 Apt Elev 1498
--	------------------------	---

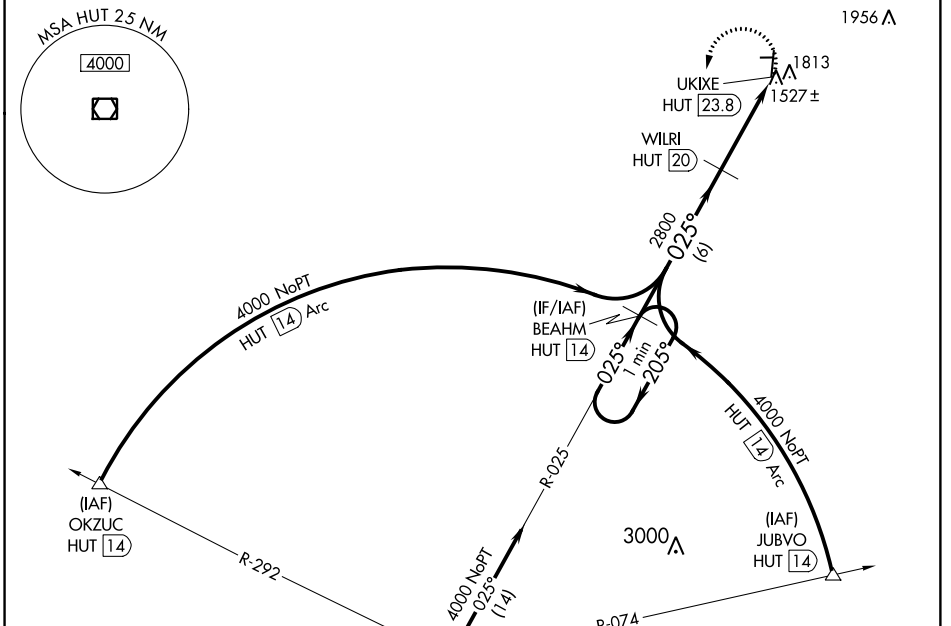
VOR RWY 36

MC PHERSON (MPR)

NA Circling NA to Rwy's 8 and 26. DME required. When local altimeter setting not received, use Salina altimeter setting and increase all MDA 100 feet and visibility Cat C ¼ SM.

MISSED APPROACH: Climbing left turn to 4000 on HUT VOR/DME R-025 to BEAHM 14 DME and hold.

AWOS-3 119.025	WICHITA APP CON 125.5 306.2	UNICOM 122.8 (CTAF) 0
--------------------------	---------------------------------------	---------------------------------

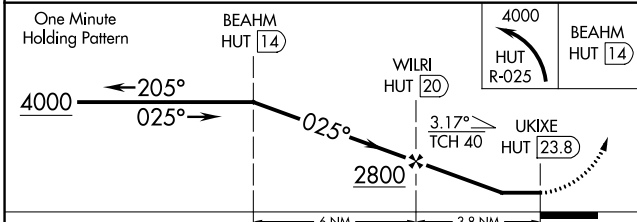
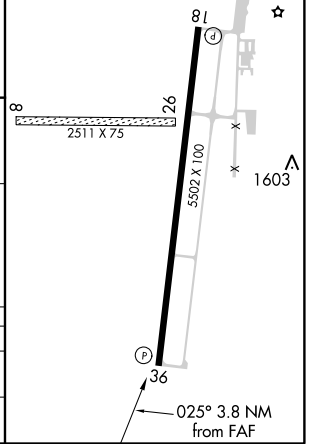


NC-2, 21 MAY 2020 to 18 JUN 2020

NC-2, 21 MAY 2020 to 18 JUN 2020

IAF
HUTCHINSON
116.8 HUT
Chan 115

ELEV 1498	TDZE 1497
MIRL Rwy 18-36	REIL Rwy's 18 and 36



CATEGORY	A	B	C	D
S-36	2020-1 523 (600-1)	2020-1¼ 523 (600-1¼)	2020-1½ 523 (600-1½)	NA
CIRCLING	2120-1 622 (700-1)	2120-1¼ 622 (700-1¼)	2120-1¾ 622 (700-1¾)	NA