

VOR/DME ANW 112.7 Chan 74	APP CRS 008°	Rwy Idg TDZE Apt Elev	6824 2589 2589
---	------------------------	-----------------------------	---

VOR RWY 35

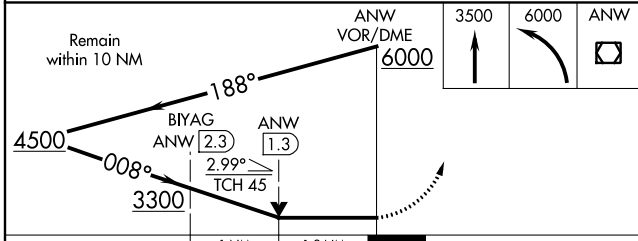
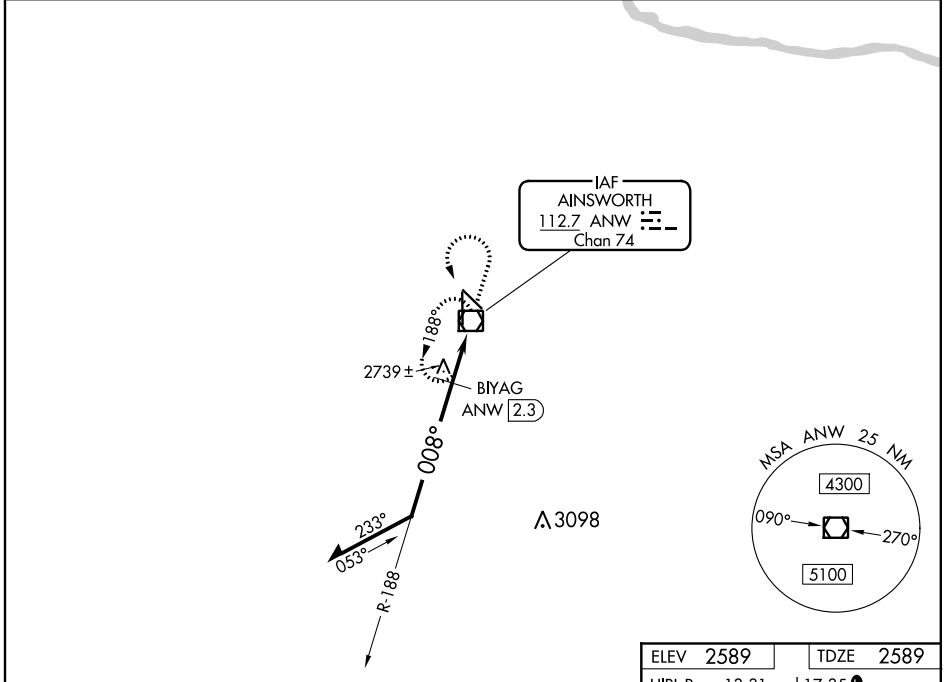
AINSWORTH RGNL (ANW)

⚠️ When local altimeter setting not received, procedure NA.
⚠️ For inoperative ALS, increase BIYAG fix minimums S-35 Cat D visibility to 1¼.

MALSRL

MISSED APPROACH: Climb to 3500 then climbing left turn to 6000 direct ANW VOR/DME and hold.

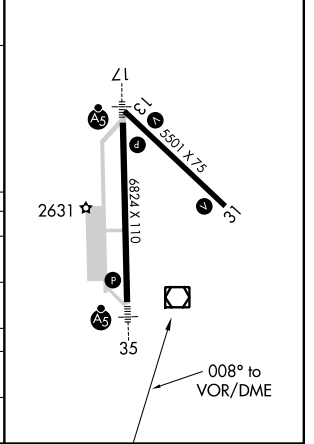
AWOS-3 118,325	DENVER CENTER 127.95 338.2	UNICOM 122.8 (CTAF) 1
--------------------------	--------------------------------------	--



CATEGORY	A	B	C	D
S-35	3300-½	711 (800-½)	3300-1½ 711 (800-1½)	3300-1¾ 711 (800-1¾)
CIRCLING	3300-1	711 (800-1)	3300-2 711 (800-2)	3300-2¼ 711 (800-2¼)
BIYAG FIX MINIMUMS (DME REQUIRED)				
S-35	3000-½	411 (500-½)	3000-¾ 411 (500-¾)	3000-1 411 (500-1)
CIRCLING	3000-1 411 (500-1)	3040-1 451 (500-1)	3040-1½ 451 (500-1½)	3140-2 551 (600-2)

ELEV 2589	TDZE 2589
-----------	-----------

HIRL Rwys 13-31 and 17-35 **1**
 REIL Rwy 31 **1**



NC-2, 21 MAY 2020 to 18 JUN 2020

NC-2, 21 MAY 2020 to 18 JUN 2020