

WAAS CH <b>86507</b> <b>W31A</b>	APP CRS <b>308°</b>	Rwy Idg TDZE <b>2585</b> Apt Elev <b>2589</b>	<b>5501</b>
--	------------------------	---	-------------

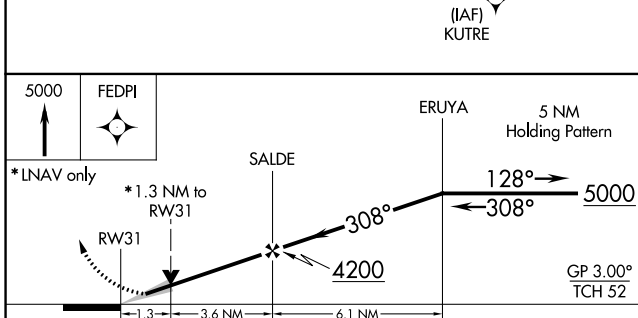
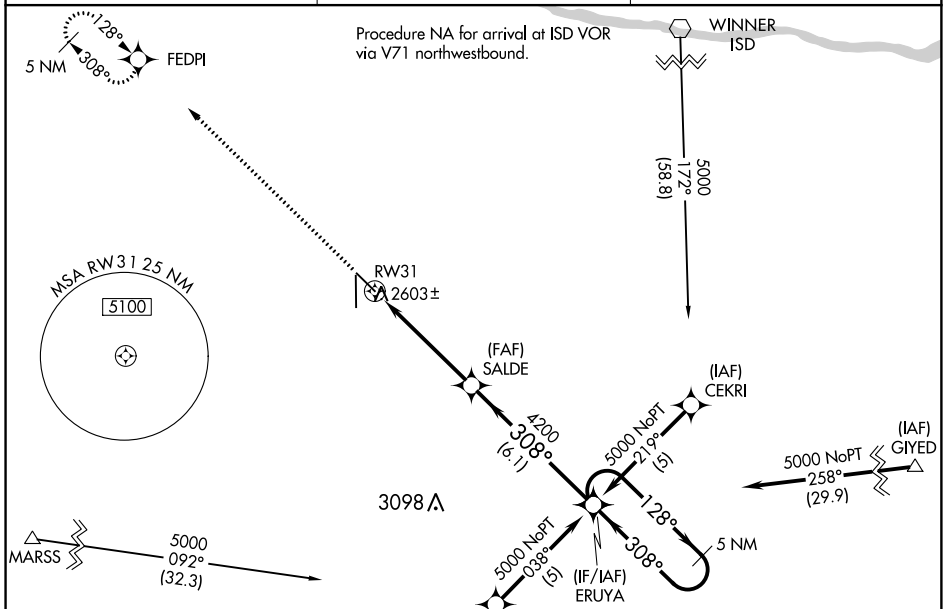
# RNAV (GPS) RWY 31

AINSWORTH RGNL (A.N.W)

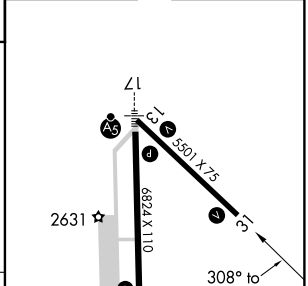
**⚠** For uncompensated Baro-VNAV systems, LNAV/VNAV NA below -20°C (-4°F) or above 43°C (109°F). DME/DME RNP-0.3 NA. When local altimeter setting not received, use Valentine altimeter setting and increase all DA 70 feet and LNAV/VNAV visibility ¼ mile all Cats, increase all MDA 80 feet, and LNAV Cat C and D visibility ¼ mile. Baro-VNAV and VDP NA with Valentine altimeter setting.

**⚠** MISSED APPROACH: Climb to 5000 direct FEDPI and hold.

AWOS-3 <b>118.325</b>	DENVER CENTER <b>127.95 338.2</b>	UNICOM <b>122.8 (CTAF) ①</b>
--------------------------	--------------------------------------	---------------------------------



ELEV 2589	TDZE 2585
-----------	-----------



CATEGORY	A	B	C	D
LPV DA		2835-1	250 (300-1)	
LNAV/VNAV DA		2873-1	288 (300-1)	
LNAV MDA	3060-1	475 (500-1)	3060-1¼ 475 (500-1¼)	3060-1½ 475 (500-1½)
CIRCLING	3060-1	471 (500-1)	3060-1½ 471 (500-1½)	3140-2 551 (600-2)

HIRL Rwy 13-31 and 17-35 ①

REIL Rwy 31 ①

NC-2, 21 MAY 2020 to 18 JUN 2020

NC-2, 21 MAY 2020 to 18 JUN 2020