

WAAS CH 70417 W17A	APP CRS 173°	Rwy Idg TDZE Apt Elev	6824 2589 2589
--	------------------------	-----------------------------	---

RNAV (GPS) RWY 17

AINSWORTH RGNL (ANW)

⚠ For inoperative MALSR, increase LNAV/VNAV Cat D visibility to 1 mile. For uncompensated Baro-VNAV systems, LNAV/VNAV NA below -20°C (-4°F) or above 43°C (109°F). DME/DME RNP-0.3 NA. When local altimeter setting not received, use Valentine altimeter setting and increase DA 70 feet and LNAV/VNAV Cat A/B/C visibility ¼ mile, increase all MDA 80 feet and LNAV Cat D visibility ¼ mile. Baro-VNAV and VDP NA when using Valentine altimeter setting.

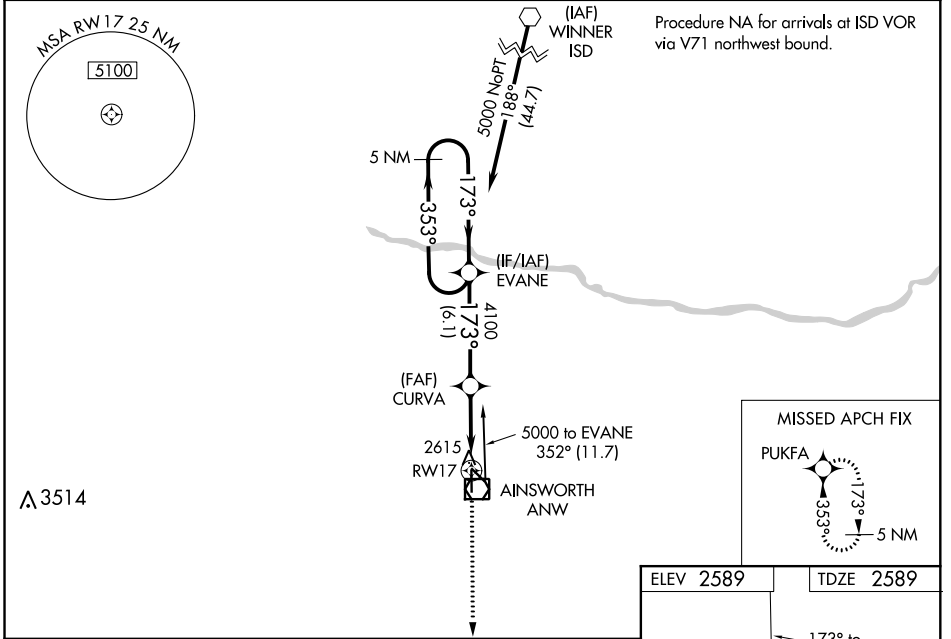
MALSR 

MISSED APPROACH: Climb to 5000 direct PUKFA and hold.

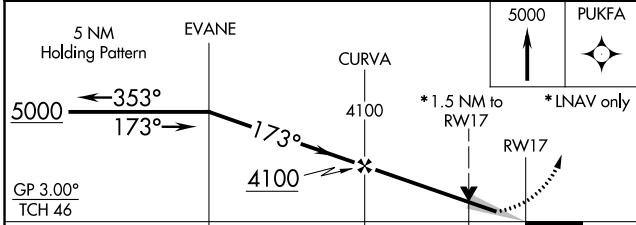
AWOS-3
118.325

DENVER CENTER
127.95 338.2

UNICOM
122.8 (CTAF) ①



△ 3514



ELEV 2589	TDZE 2589
HIRL Rwys 13-31 and 17-35 ①	
REIL Rwy 31 ①	

NC-2, 21 MAY 2020 to 18 JUN 2020

NC-2, 21 MAY 2020 to 18 JUN 2020