

WAAS CH 99706 W13A	APP CRS 128°	Rwy Idg TDZE Apt Elev	5501 2587 2589
--	------------------------	-----------------------------	---

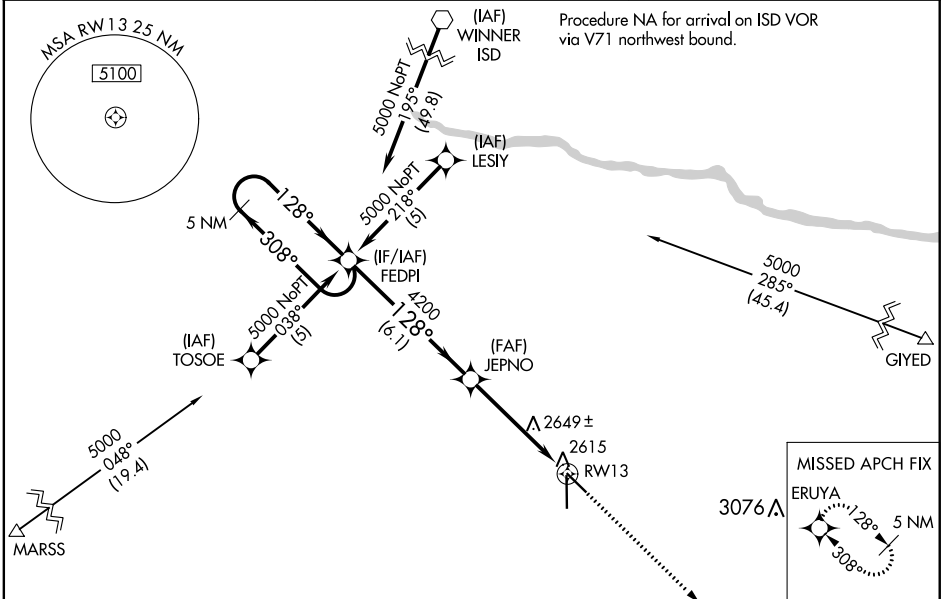
RNAV (GPS) RWY 13

AINSWORTH RGNL (A.N.W)

⚠ For uncompensated Baro-VNAV systems, LNAV/VNAV NA below -20°C (-4°F) or above 43°C (109°F). DME/DME RNP-0.3 NA. When local altimeter setting not received, use Valentine altimeter setting and increase all DA 70 feet and LNAV/VNAV visibility ¼ mile all Cats, increase all MDA 80 feet and LNAV Cat D visibility ¼ mile. Baro-VNAV and VDP NA with Valentine altimeter setting.

MISSED APPROACH:
Climb to 5000 direct ERUYA and hold.

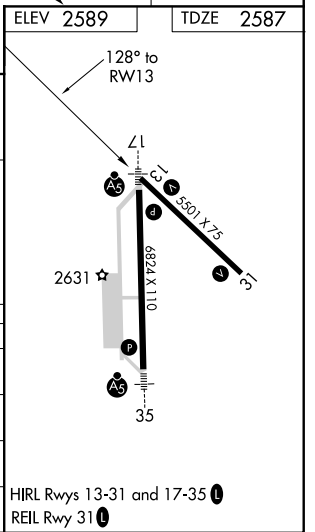
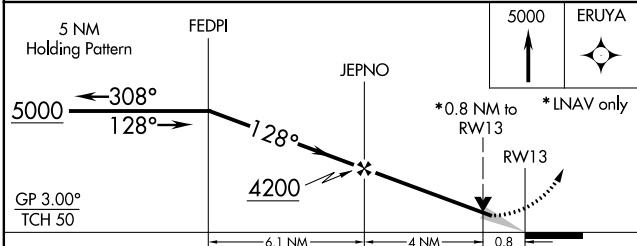
AWOS-3 118.325	DENVER CENTER 127.95 338.2	UNICOM 122.8 (CTAF) ①
--------------------------	--------------------------------------	---------------------------------



NC-2, 21 MAY 2020 to 18 JUN 2020

NC-2, 21 MAY 2020 to 18 JUN 2020

ELEV 2589	TDZE 2587
-----------	-----------



CATEGORY	A	B	C	D
LPV DA		2837-1	250 (300-1)	
LNAV/VNAV DA		2891-1	304 (400-1)	
LNAV MDA		2900-1	313 (400-1)	
CIRCLING	3000-1 411 (500-1)	3040-1 451 (500-1)	3040-1½ 451 (500-1½)	3140-2 551 (600-2)

HIRL Rwys 13-31 and 17-35 ①
REIL Rwy 31 ①