

VOR/DME BSV <b>112.4</b> Chan <b>71</b>	APP CRS <b>115°</b>	Rwy Idg <b>5189</b> TDZE <b>1113</b> Apt Elev <b>1136</b>
---	------------------------	---

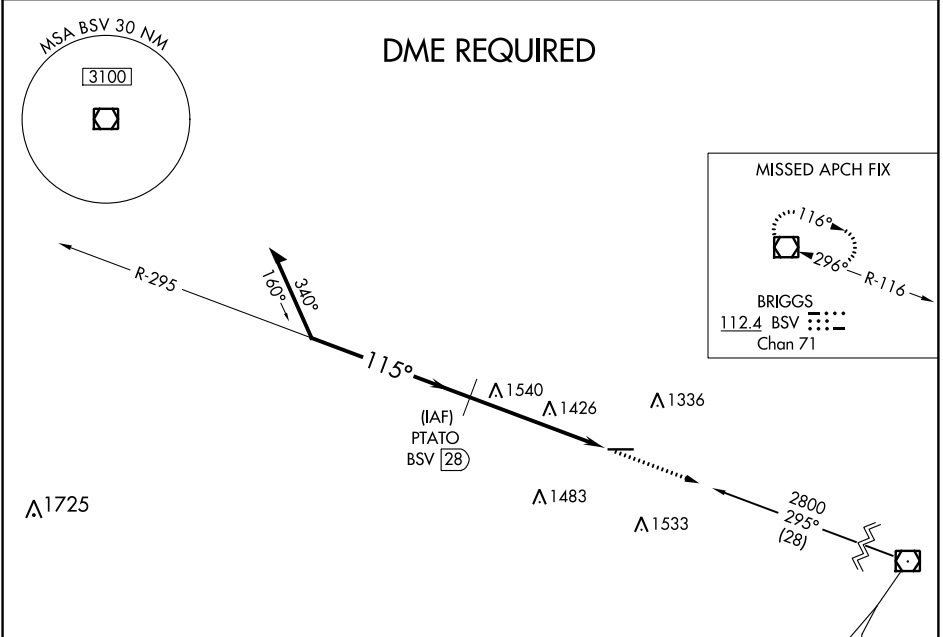
# VOR RWY 10

WAYNE COUNTY (BJJ)

**▼** DME required. When local altimeter setting not received, use Akron-Canton Rgnl altimeter setting and increase all MDA 60 feet; increase S-10 Cat C/D and Circling Cat C/D visibilities ¼ mile. Rwy 10 helicopter visibility reduction below ¾ SM NA.

**MISSED APPROACH:** Climb to 2800 direct BSV VOR/DME and hold.

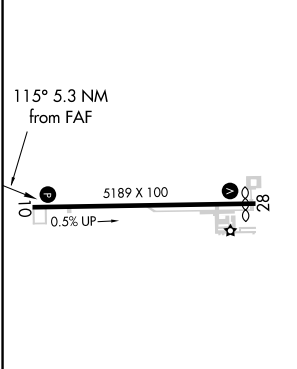
ASOS <b>118.075</b>	CLEVELAND APP CON ★ <b>118.6 371.875</b>	CLNC DEL <b>121.75</b>	UNICOM <b>122.8 (CTAF) 0</b>
------------------------	---	---------------------------	---------------------------------



EC-2, 21 MAY 2020 to 18 JUN 2020

EC-2, 21 MAY 2020 to 18 JUN 2020

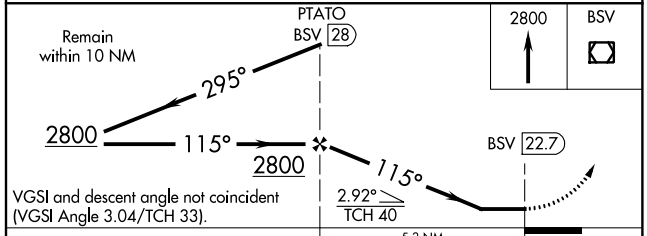
ELEV 1136	TDZE 1113
-----------	-----------



REIL Rwy 10 and 28 0  
HIRL Rwy 10-28 0

FAF to MAP 5.3 NM

Knots	60	90	120	150	180
Min:Sec	5:18	3:32	2:39	2:07	1:46



CATEGORY	A	B	C	D
S-10	1840-1 727 (800-1)	1840-1 ¼ 727 (800-1 ¼)	1840-2 727 (800-2)	1840-2 ¼ 727 (800-2 ¼)
CIRCLING	1840-1 704 (800-1)	1840-1 ¼ 704 (800-1 ¼)	1840-2 704 (800-2)	1840-2 ¼ 704 (800-2 ¼)