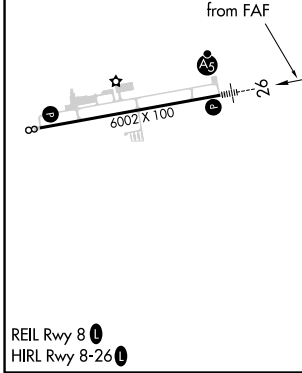
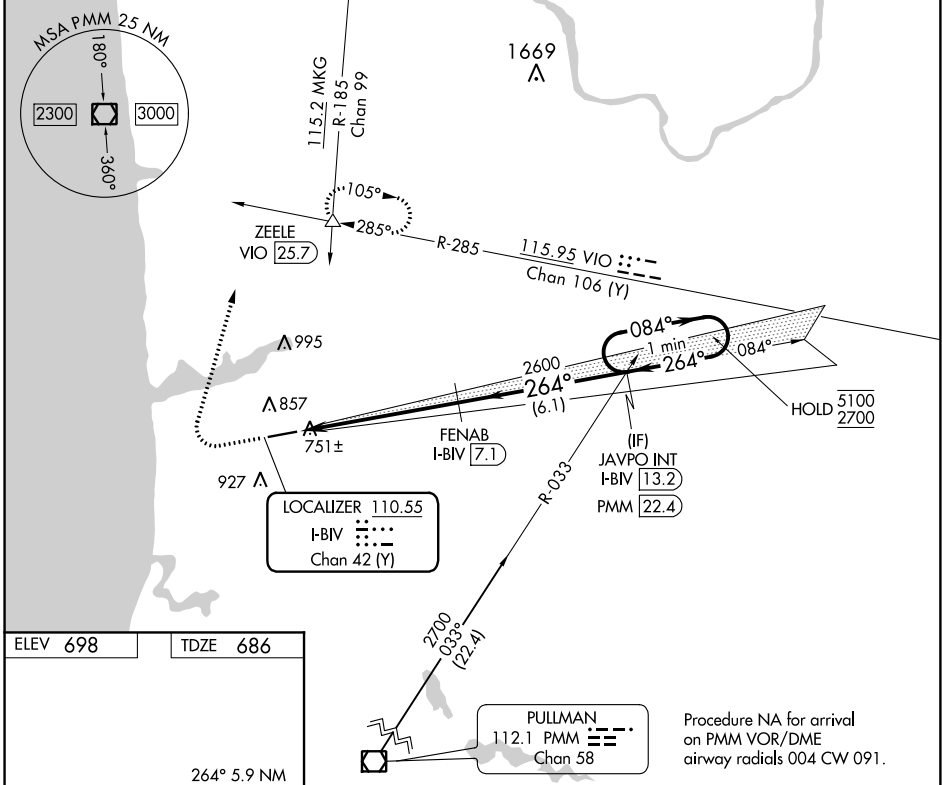


LOC/DME I-BIV <b>110.55</b>	APP CRS <b>264°</b>	Rwy Idg TDZE Apt Elev	<b>6002</b> <b>686</b> <b>698</b>
Chan <b>42 (Y)</b>			

# ILS or LOC RWY 26

WEST MICHIGAN RGNL (BIV)

DME required.		MALSR	MISSED APPROACH: Climb to 1500 then climbing right turn to 2600 on heading 020° and VIO VOR/DME R-285 to ZEELE/VIO 25.7 DME and hold.
ASOS <b>119.025</b>	GREAT LAKES APP CON* <b>133.825 290.35</b>	CLNC DEL <b>123.95</b>	UNICOM <b>123.05 (CTAF) 0</b>



ELEV 698	TDZE 686	Procedure NA for arrival on PMM VOR/DME airway radials 004 CW 091.			
1500	2600	ZEELE VIO R-285	FENAB I-BIV (7.1)	JAVPO INT I-BIV (13.2)	One Minute Holding Pattern
*LOC only	*I-BIV (1.2)	*I-BIV (2.1)	2600	2600	5100/2700
	0.9 NM	5 NM	6.1 NM		GS 3.00° TCH 32
CATEGORY	A	B	C	D	
S-ILS 26		886-1/2 200 (200-1/2)		NA	
S-LOC 26		1020-1/2 334 (400-1/2)		NA	
CIRCLING	1200-1 502 (600-1)	1240-1 542 (600-1)	1240-1 1/2 542 (600-1 1/2)	NA	

EC-1, 21 MAY 2020 to 18 JUN 2020

EC-1, 21 MAY 2020 to 18 JUN 2020