

WAAS CH <b>82531</b> <b>W09A</b>	APP CRS <b>089°</b>	Rwy Idg TDZE Apt Elev	<b>5100</b> <b>706</b> <b>706</b>
--	------------------------	-----------------------------	---

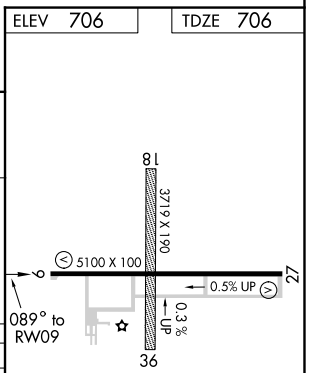
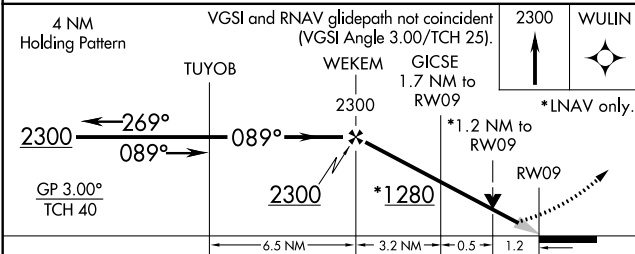
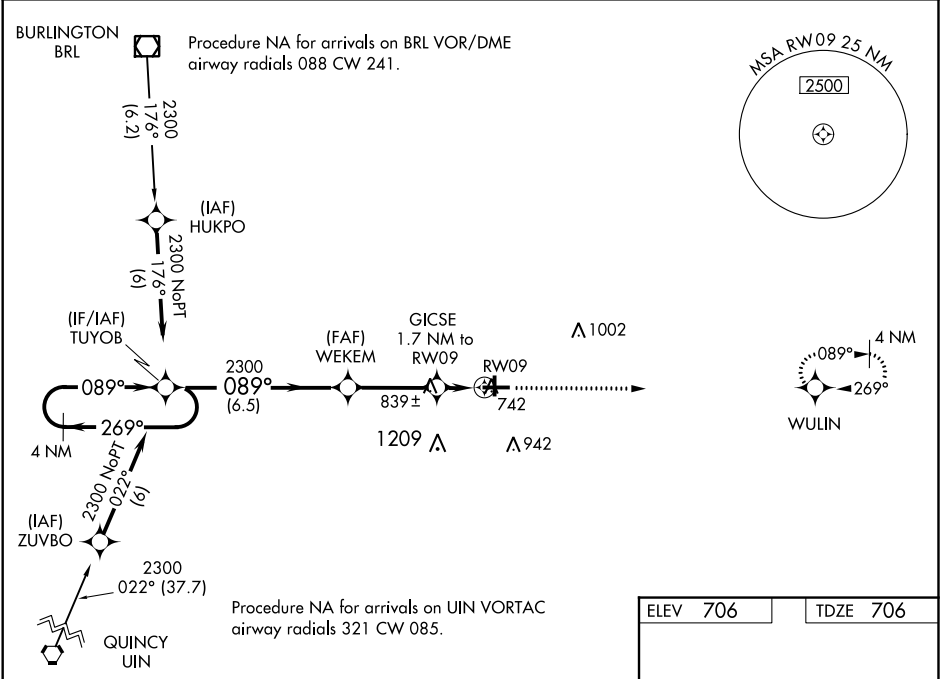
# RNAV (GPS) RWY 9

MACOMB MUNI (MQB)

**⚠** For uncompensated Baro-VNAV systems, LNAV/VNAV NA below -16°C (4°F) or above 54°C (130°F). DME/DME RNP-0.3 NA. When local altimeter setting not received, use Burlington, IA altimeter setting and increase all DA 63 feet and all MDA 80 feet; increase LPV visibility 1/8 mile all Cats, LNAV/VNAV all Cats, LNAV Cat C/D and Circling Cat C/D visibility 1/4 mile. Baro-VNAV and VDP NA when using Burlington, IA altimeter setting.

**MISSED APPROACH:**  
Climb to 2300 direct WULIN and hold.

AWOS-3 <b>119.025</b>	CHICAGO CENTER <b>135.6 316.1</b>	UNICOM <b>122.8 (CTAF)</b>
--------------------------	--------------------------------------	-------------------------------



CATEGORY	A	B	C	D
LPV DA		906-3/4	200 (200-3/4)	
LNAV/VNAV DA		1110-13/8	404 (500-13/8)	
LNAV MDA	1100-1	394 (400-1)	1100-11/8	394 (400-11/8)
CIRCLING	1120-1 414 (500-1)	1260-1 554 (600-1)	1260-11/2 554 (600-11/2)	1300-2 594 (600-2)

REIL Rwy 9 and 27  
HIRL Rwy 9-27

EC-3, 21 MAY 2020 to 18 JUN 2020

EC-3, 21 MAY 2020 to 18 JUN 2020