

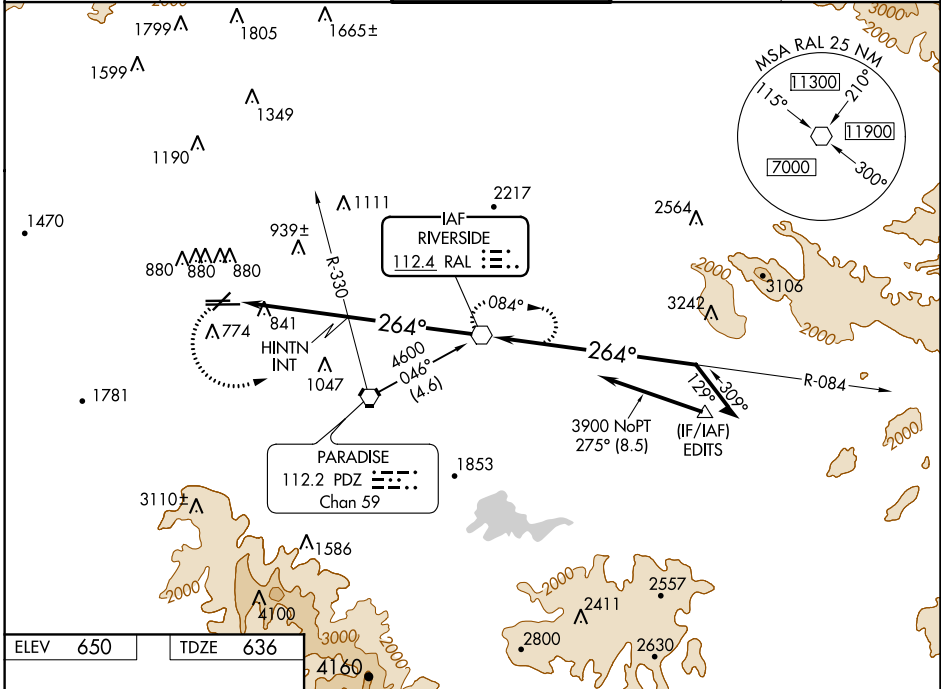
VOR RWY 26R

CHINO (CNO)

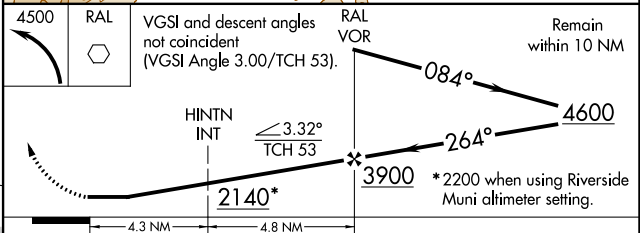
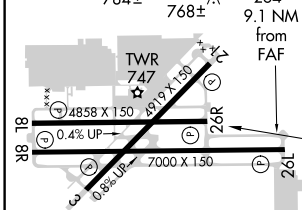
VOR RAL 112.4	APP CRS 264°	Rwy Idg 4858
		TDZE 636
		Apt Elev 650

<p>▼ NA Visibility reduction by helicopters NA. When local altimeter setting not received, use Riverside Muni altimeter setting and increase all MDA 60 feet, increase HINTN FIX minimums S-26R and circling Cat B, C, and D visibility ¼ mile.</p>	<p>MISSED APPROACH: Climbing left turn to 4500 direct RAL VOR and hold, continue climb-in-hold to 4500.</p>
---	---

ATIS 125.85	SOCAL APP CON 135.4 318.2	CHINO TOWER ★ 118.5 (CTAF)	GND CON 121.6	UNICOM 122.95
-----------------------	-------------------------------------	--------------------------------------	-------------------------	-------------------------



ELEV 650	TDZE 636
----------	----------



REIL Rwy 3 and 21
 MIRL Rwy 3-21 and 8R-26L
 HIRL Rwy 8L-26R

FAF to MAP 9.1 NM

Knots	60	90	120	150	180
Min:Sec	9:06	6:04	4:33	3:38	3:02

CATEGORY	A	B	C	D
S-26R	2140-1¼ 1504 (1500-1¼)	2140-1½ 1504 (1500-1½)	2140-3	1504 (1500-3)
CIRCLING	2140-1¼ 1490 (1500-1¼)	2140-1½ 1490 (1500-1½)	2140-3	1490 (1500-3)
HINTN FIX MINIMUMS				
S-26R	1320-1	684 (700-1)	1320-2 684 (700-2)	1320-2¼ 684 (700-2¼)
CIRCLING	1320-1	670 (700-1)	1320-2 670 (700-2)	1320-2¼ 670 (700-2¼)