

RNAV (GPS) RWY 26R

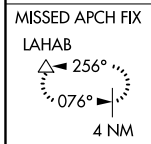
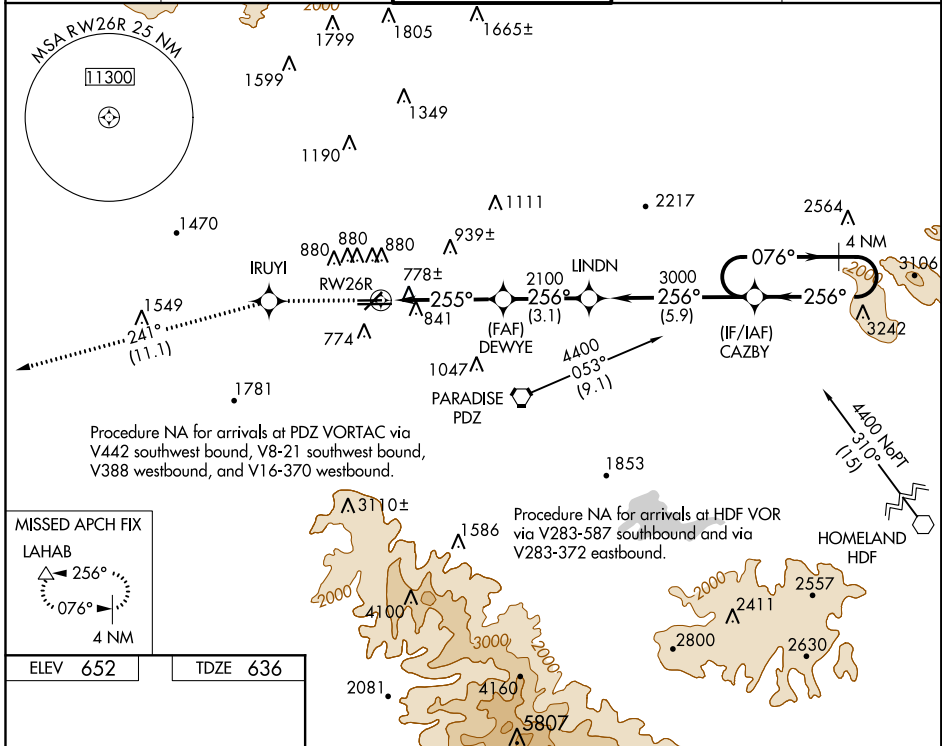
CHINO (CNO)

WAAS CH 97320 W26A	APP CRS 255°	Rwy Idg TDZE Apt Elev	4858 636 652
--	------------------------	-----------------------------	---

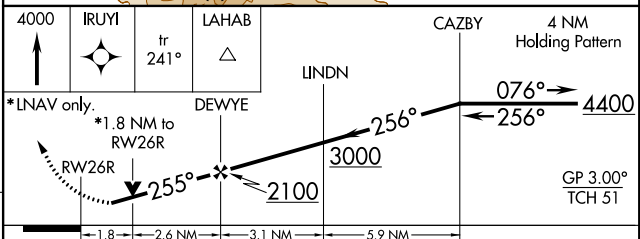
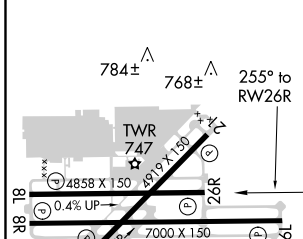
For uncompensated Baro-VNAV systems, LNAV/VNAV NA below -16°C (4°F) or above 47°C (116°F). DME/DME RNP-0.3 NA. Helicopter visibility reduction below 3/4 SM not authorized.

MISSED APPROACH: Climb to 4000 direct IRUYI and via 241° track to LAHAB and hold.

ATIS 125.85	SOCAL APP CON 135.4 318.2	CHINO TOWER * 118.5 (CTAF)	GND CON 121.6	UNICOM 122.95
-----------------------	-------------------------------------	--------------------------------------	-------------------------	-------------------------



ELEV 652	TDZE 636
----------	----------



REIL Rwy 3 and 21 MIRL Rwy 3-21 and 8R-26L HIRL Rwy 8L-26R	<table border="1"> <tr> <th>CATEGORY</th> <th>A</th> <th>B</th> <th>C</th> <th>D</th> </tr> <tr> <td>LPV DA</td> <td colspan="4">1030-1¼ 394 (400-1¼)</td> </tr> <tr> <td>LNAV/VNAV DA</td> <td colspan="4">1177-2 541 (600-2)</td> </tr> <tr> <td>LNAV MDA</td> <td>1260-1 624 (700-1)</td> <td>1260-1¾ 624 (700-1¾)</td> <td>1260-2 624 (700-2)</td> <td>1260-2 608 (700-2)</td> </tr> <tr> <td>CIRCLING</td> <td colspan="3">1260-1¾ 608 (700-1¾)</td> <td>1260-2 608 (700-2)</td> </tr> </table>	CATEGORY	A	B	C	D	LPV DA	1030-1¼ 394 (400-1¼)				LNAV/VNAV DA	1177-2 541 (600-2)				LNAV MDA	1260-1 624 (700-1)	1260-1¾ 624 (700-1¾)	1260-2 624 (700-2)	1260-2 608 (700-2)	CIRCLING	1260-1¾ 608 (700-1¾)			1260-2 608 (700-2)
CATEGORY	A	B	C	D																						
LPV DA	1030-1¼ 394 (400-1¼)																									
LNAV/VNAV DA	1177-2 541 (600-2)																									
LNAV MDA	1260-1 624 (700-1)	1260-1¾ 624 (700-1¾)	1260-2 624 (700-2)	1260-2 608 (700-2)																						
CIRCLING	1260-1¾ 608 (700-1¾)			1260-2 608 (700-2)																						

SW-3, 21 MAY 2020 to 18 JUN 2020

SW-3, 21 MAY 2020 to 18 JUN 2020