

WAAS CH 86905 W04A	APP CRS 040°	Rwy Idg 4775 TDZE 58 Apt Elev 72
--	------------------------	---

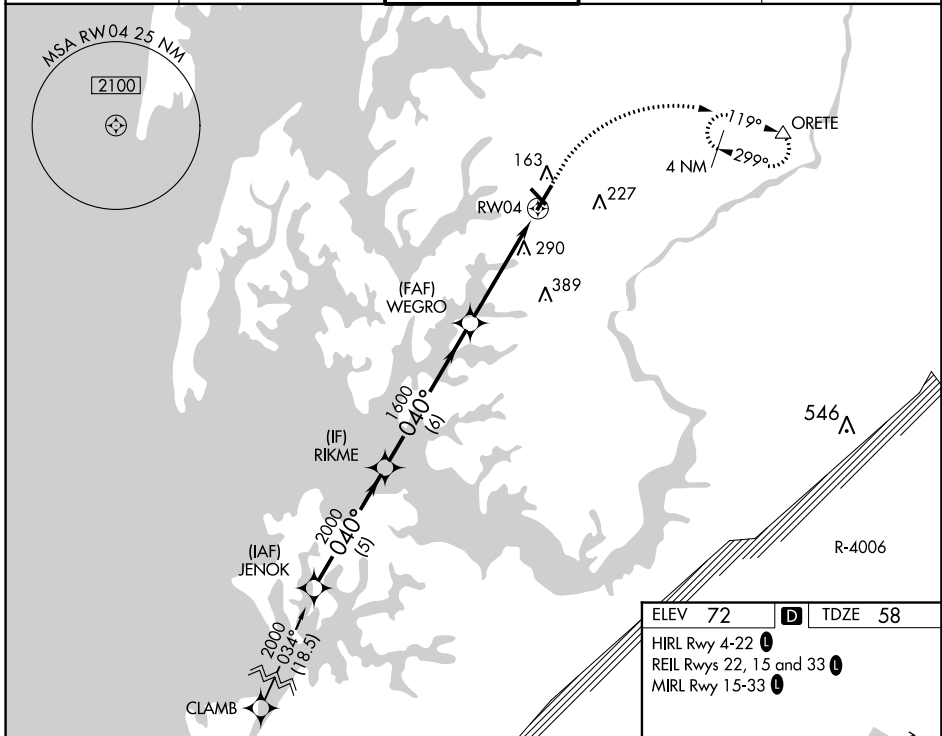
RNAV (GPS) RWY 4

EASTON/NEWMAM FIELD (ESN)

⚠ DME/DME RNP-0.3 NA. When local altimeter setting not received, use Cambridge altimeter setting; increase LPV DA to 303 feet, LNAV/VNAV DA to 391 feet and all MDA 60 feet; increase LPV and LNAV/VNAV all Cats visibility and LNAV Cat C/D visibility 1/8 SM and increase Circling Cat C/D visibility 1/4 SM. VDP and Baro-VNAV NA when using Cambridge altimeter setting. Circling Rwy 15, 33 NA at night. For uncompensated Baro-VNAV systems, LNAV/VNAV NA below -15°C (5°F) or above 54°C (130°F).

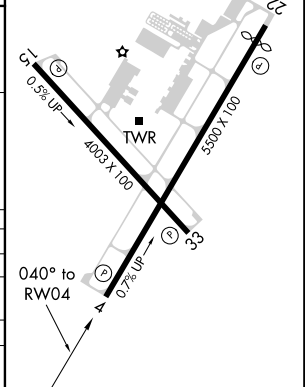
MISSED APPROACH:
Climb to 700 then climbing right turn to 2000 direct ORETE and hold.

ATIS 124.475	POTOMAC APP CON 133.75 254.35	EASTON TOWER ★ 118.525 (CTAF) 0	GND CON 119.075	CLNC DEL 119.075
------------------------	---	--	---------------------------	----------------------------



ELEV 72	D	TDZE 58
HIRL Rwy 4-22 0		
REIL Rwy 22, 15 and 33 0		
MIRL Rwy 15-33 0		

	JENOK	RIKME	WEGRO	RW04	ORETE
	2000	2000	1600	700	2000
	040°	040°	040°	040°	040°
GP 3.00° TCH 44	*1.6 NM to RW04 *LNAV only				
	5 NM	6 NM	3.1 NM	1.6 NM	
CATEGORY	A	B	C	D	
LPV DA		258-3/4	200 (200-3/4)		
LNAV/VNAV DA		346-1	288 (300-1)		
LNAV MDA	600-1	542 (600-1)	600-1 3/8	542 (600-1 1/8)	
C CIRCLING	600-1 528 (600-1)	640-1 568 (600-1)	640-1 1/8 568 (600-1 1/8)	740-2 668 (700-2)	



NE-3, 21 MAY 2020 to 18 JUN 2020

NE-3, 21 MAY 2020 to 18 JUN 2020