

LOC/DME I-FGH <b>109.35</b> Chan <b>30 (Y)</b>	APP CRS <b>041°</b>	Rwy Idg <b>4775</b> TDZE <b>58</b> Apt Elev <b>72</b>
--	------------------------	---

# ILS or LOC RWY 4

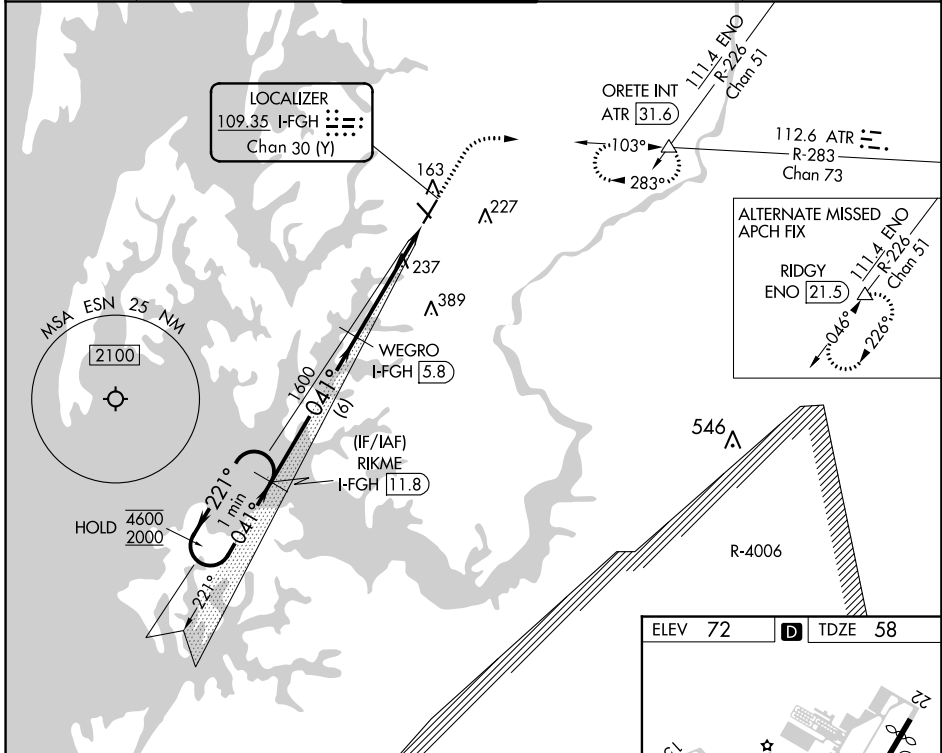
EASTON/NEWMAM FIELD (ESN)

RADAR and DME required for procedure entry. DME required for LOC only.

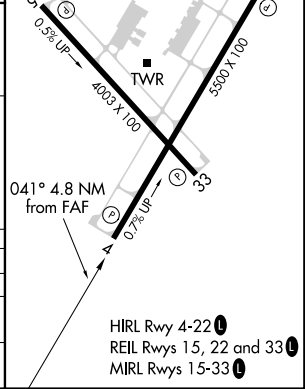
**⚠** Circling Rwy 15, 33 NA at night. Autopilot coupled approach NA below 660.

MISSED APPROACH: Climb to 2000 on heading 041° and on ATR VOR/DME R-283 to ORETE INT/ATR 31.6 DME and hold.

ATIS <b>124.475</b>	POTOMAC APP CON <b>133.75 254.35</b>	EASTON TOWER * <b>118.525 (CTAF) 0</b>	GND CON <b>119.075</b>	CLNC DEL <b>119.075</b>
------------------------	---	---	---------------------------	----------------------------



One Minute Holding Pattern	RIKME I-FGH (11.8)	2000 ↑ hdg 041°	ATR R-283	ORETE △
4600 ← 221° 2000 → 041°	WEGRO I-FGH (5.8)	* I-FGH (2.5)	* LOC only	
GS 3.00° TCH 44	1600	I-FGH (1)	041° 4.8 NM from FAF	
CATEGORY	A	B	C	D
S-ILS 4	273-3/4		215 (300-3/4)	
S-LOC 4	540-1	482 (500-1)	540-1 3/8	482 (500-1 3/8)
<b>C</b> CIRCLING	540-1 468 (500-1)	640-1 568 (600-1)	640-1 1/2 568 (600-1 1/2)	740-2 668 (700-2)



NE-3, 21 MAY 2020 to 18 JUN 2020

NE-3, 21 MAY 2020 to 18 JUN 2020