

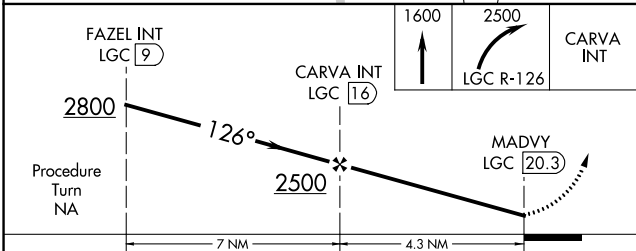
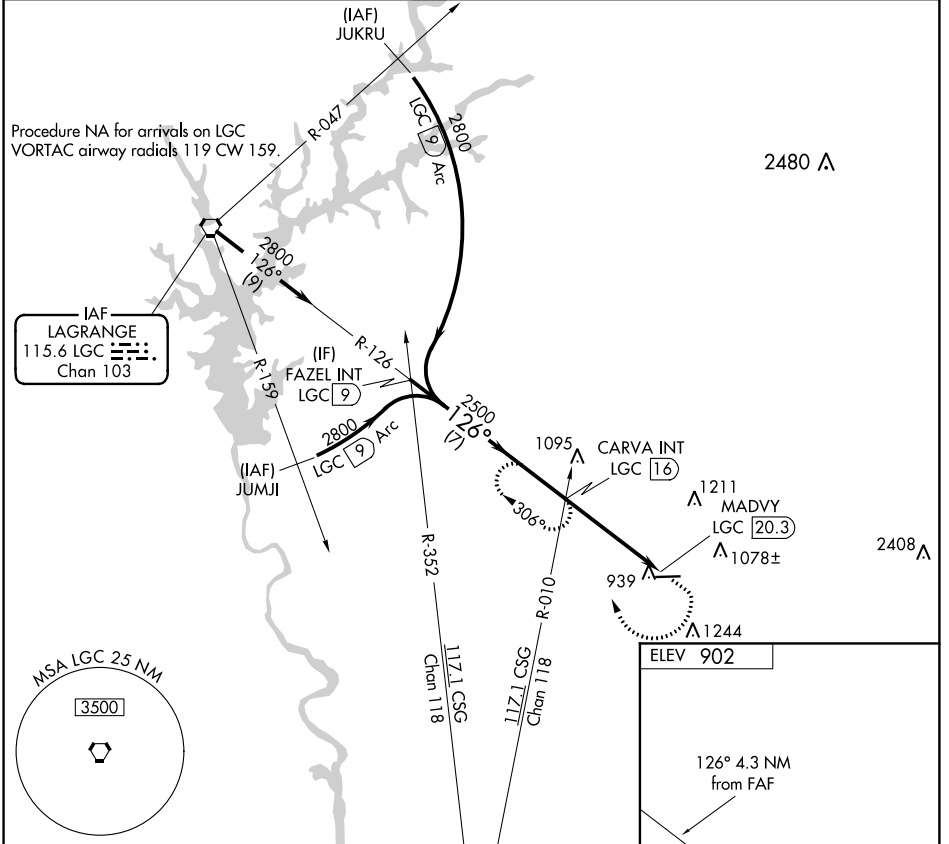
VORTAC LGC 115.6 Chan 103	APP CRS 126°	Rwy Idg TDZE Apt Elev	N/A N/A 902
---	------------------------	-----------------------------	--

VOR-A
HARRIS COUNTY (PIM)

▼ When local altimeter setting not received, use LaGrange altimeter setting.
▲ Circling Rwy 27 NA at night.

MISSED APPROACH: Climb to 1600 then climbing right turn to 2500 on LGC VORTAC R-126 to CARVA INT/LGC 16 DME and hold.

AWOS-3PT 120.275	LGC AWOS-3 126.325	ATLANTA APP CON* 124.2 323.1	CLNC DEL 127.7	GCO 121.725	UNICOM 122.8 (CTAF) 0
----------------------------	------------------------------	--	--------------------------	-----------------------	--



ELEV 902

126° 4.3 NM from FAF

MIRL Rwy 9-27 **0**

CATEGORY	A	B	C	D	FAF to MAP 4.3 NM					
CIRCLING	1480-1	1480-1¼	1480-1½	1660-2½	Knots	60	90	120	150	180
	578 (600-1)	578 (600-1¼)	578 (600-1½)	758 (800-2½)	Min:Sec	4:18	2:52	2:09	1:43	1:26

SE-4, 21 MAY 2020 to 18 JUN 2020

SE-4, 21 MAY 2020 to 18 JUN 2020