

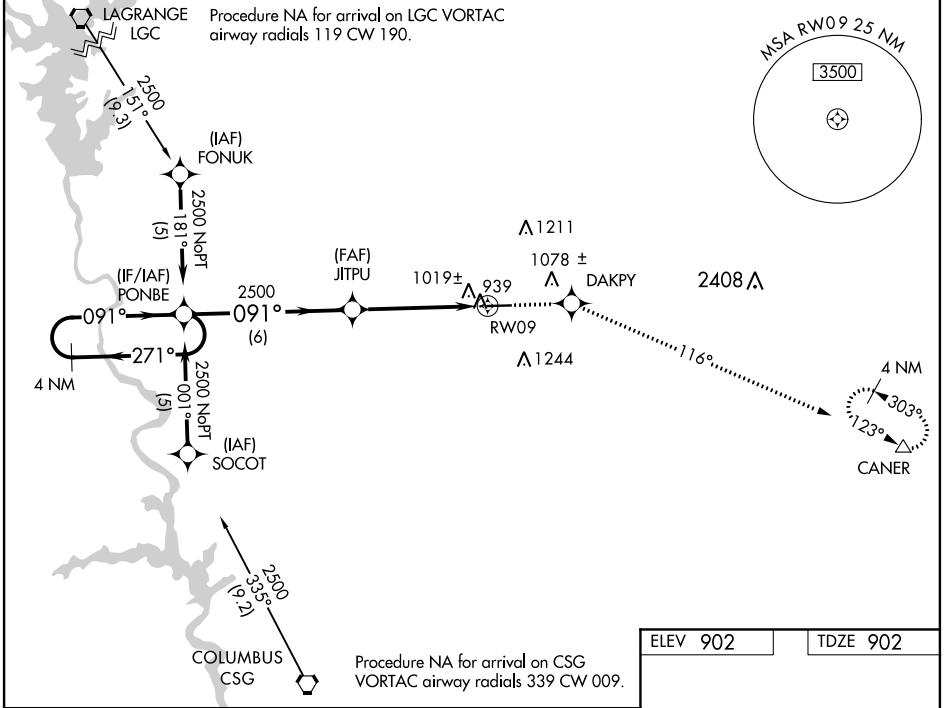
WAAS CH 58019 W09A	APP CRS 091°	Rwy Idg TDZE Apt Elev	5002 902 902
--	------------------------	-----------------------------	---

RNAV (GPS) RWY 9

HARRIS COUNTY (PIM)

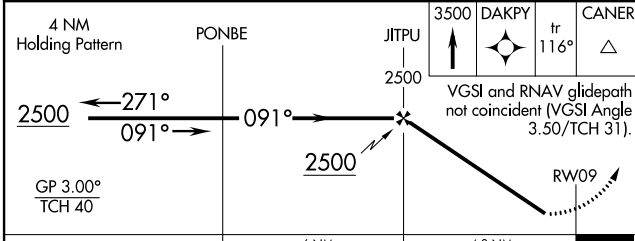
RNP APCH.		When local altimeter setting not received, use LaGrange altimeter setting. Baro-VNAV NA when using LaGrange altimeter setting. Rwy 9 helicopter visibility reduction below 3/4 SM NA. Circling Rwy 27 NA at night.		MISSED APPROACH: Climb to 3500 direct DAKPY and on track 116° to CANER and hold.	
-----------	--	---	--	--	--

AWOS-3PT 120.275	LGC AWOS-3 126.325	ATLANTA APP CON* 124.2 323.1	CLNC DEL 127.7	GCO 121.725	UNICOM 122.8 (CTAF) 0
----------------------------	------------------------------	--	--------------------------	-----------------------	--



SE-4, 21 MAY 2020 to 18 JUN 2020

SE-4, 21 MAY 2020 to 18 JUN 2020



ELEV 902	TDZE 902
MIRL Rwy 9-27 0	

CATEGORY	A	B	C	D
LPV DA		1217-1	315 (400-1)	
LNAV/VNAV DA		1383-1 3/4	481 (500-1 3/4)	
LNAV MDA	1400-1 498 (500-1)	1400-1 1/4 498 (500-1 1/4)	1400-1 1/2 498 (500-1 1/2)	
CIRCLING	1440-1 538 (600-1)	1460-1 1/2 558 (600-1 1/2)	1660-2 1/2 758 (800-2 1/2)	