

WAAS CH <b>45823</b> <b>W34A</b>	APP CRS <b>337°</b>	Rwy Idg TDZE <b>15</b> Apt Elev <b>16</b>	<b>5000</b>
--	------------------------	---	-------------

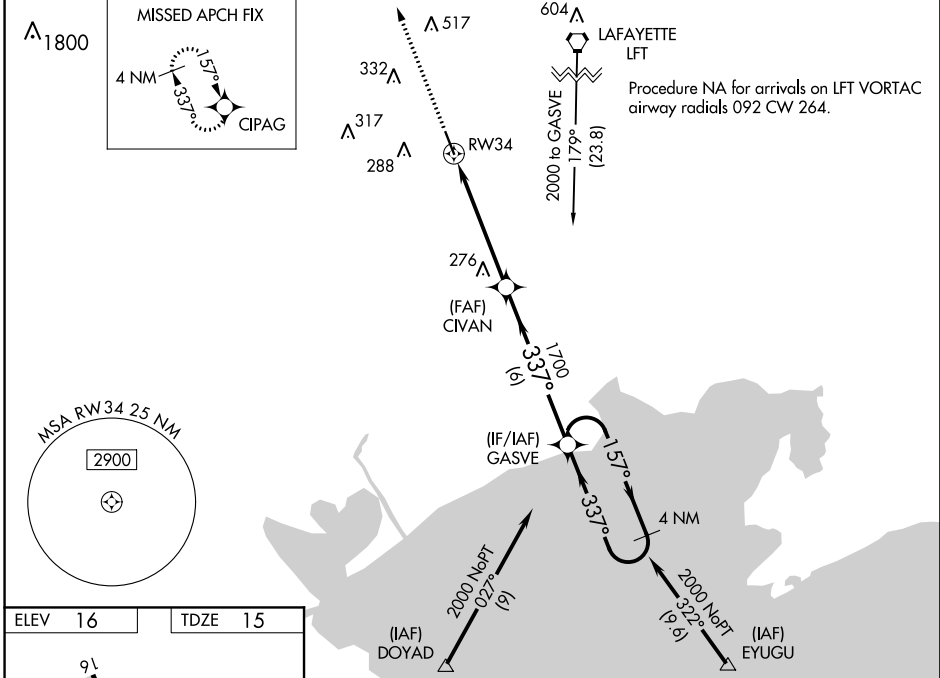
# RNAV (GPS) RWY 34

ABBEVILLE CHRIS CRUSTA MEMORIAL (IYA)

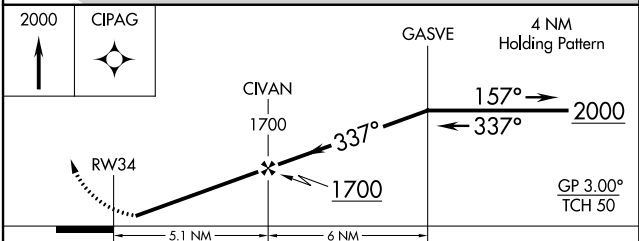
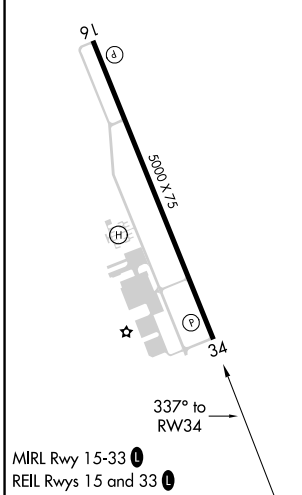
**⚠** Baro-VNAV NA when using New Iberia altimeter setting. For uncompensated Baro-VNAV systems, LNAV/VNAV NA below -15°C (5°F) or above 54°C (130°F). DME/DME RNP-0.3 NA. Helicopter visibility reduction below 3/4 SM NA. When local altimeter setting not received, use New Iberia altimeter setting and increase all DA 27 feet and all MDA 40 feet; increase LNAV/VNAV all Cats and LNAV Cat C visibility 1/8 mile.

**MISSED APPROACH:**  
Climb to 2000 direct CIPAG and hold.

AWOS-3 <b>118.875</b>	LAFAYETTE APP CON ★ <b>121.1 268.7</b>	GCO <b>135.075</b>	UNICOM <b>122.8 (CTAF)</b>
--------------------------	---	-----------------------	-------------------------------



ELEV 16	TDZE 15
---------	---------



CATEGORY	A	B	C	D
LPV DA	298-1	283 (300-1)		NA
LNAV/VNAV DA	320-1	305 (400-1)		NA
LNAV MDA	580-1	565 (600-1)	580-1 5/8 565 (600-1 5/8)	NA
CIRCLING	580-1	564 (600-1)	620-1 3/4 604 (700-1 3/4)	NA

# RNAV (GPS) RWY 34

SC-4, 21 MAY 2020 to 18 JUN 2020

SC-4, 21 MAY 2020 to 18 JUN 2020