

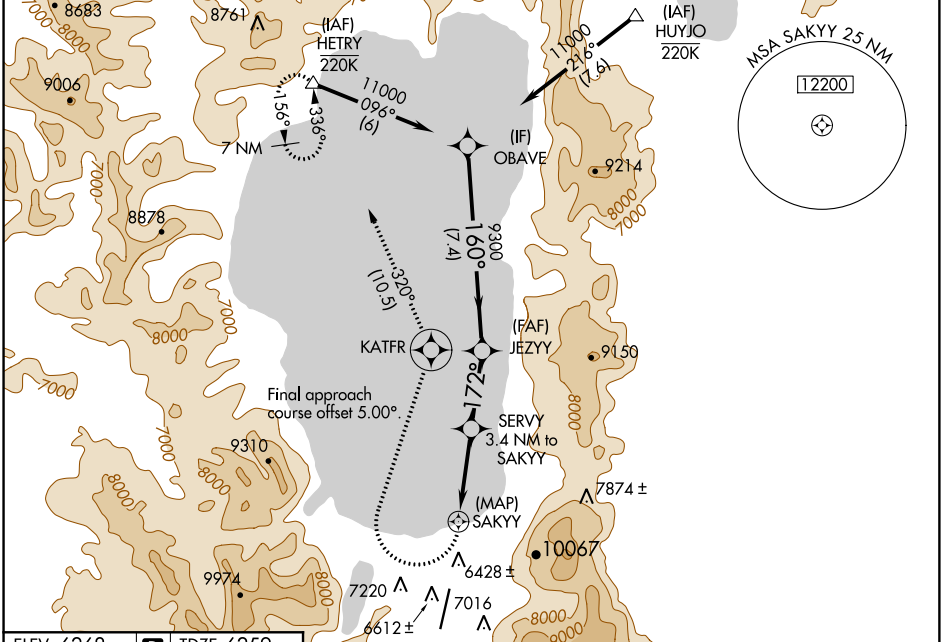
WAAS CH <b>57943</b> <b>W18A</b>	APP CRS <b>172°</b>	Rwy Idg TDZE Apt Elev	<b>7017</b> <b>6259</b> <b>6268</b>
--	------------------------	-----------------------------	---

# RNAV (GPS) RWY 18

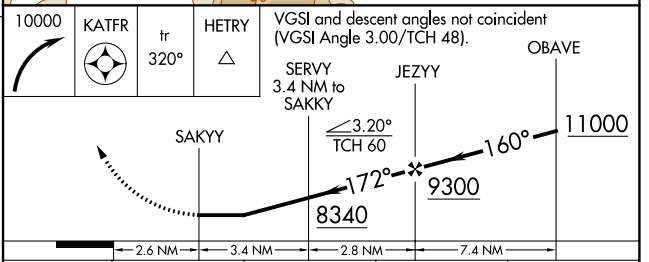
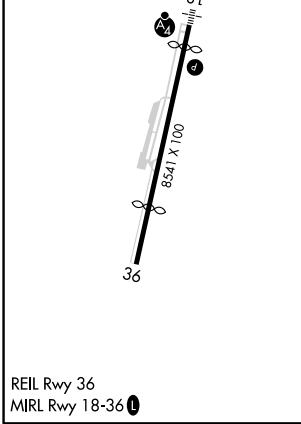
LAKE TAHOE (TVL)

RNP APCH. <b>NA</b> Circling NA at night. Rwy 18 helicopter visibility reduction below 3/4 SM NA. When local altimeter setting not received, procedure NA. Circling NA east of Rwy 18-36.	MALSF =	MISSED APPROACH: (Do not exceed 185K until KATFR). Climbing right turn to 10000 direct KATFR then on track 320° to HETRY and hold, continue climb-in-hold to 12000. * Missed approach requires minimum climb of 425 feet per NM to 10000.
---	------------	---

ASOS <b>124.725</b>	OAKLAND CENTER <b>127.95 316.1</b>	CLNC DEL <b>134.3</b>	CTAF <b>122.85</b>
------------------------	---------------------------------------	--------------------------	-----------------------



ELEV 6268	<b>D</b>	TDZE 6259
-----------	----------	-----------



CATEGORY	A	B	C	D
LP MDA *	6680-3 421 (500-3)			
LP MDA	7120-3	861 (900-3)	7140-3 881 (900-3)	7320-3 1061 (1100-3)
LNAV MDA *	6980-3 721 (800-3)			7560-3 1301 (1300-3)
LNAV MDA	7280-3 1021 (1100-3)	7620-3 1361 (1400-3)	8160-3 1901 (1900-3)	NA
<b>C</b> CIRCLING	7420-3 1152 (1200-3)	7680-3 1412 (1500-3)	8160-3 1892 (1900-3)	NA

SW-2, 21 MAY 2020 to 18 JUN 2020

SW-2, 21 MAY 2020 to 18 JUN 2020