

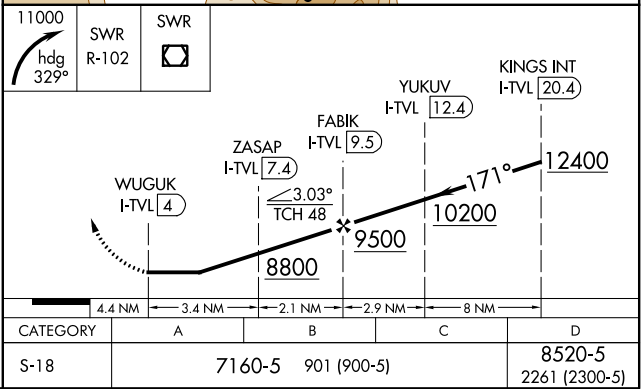
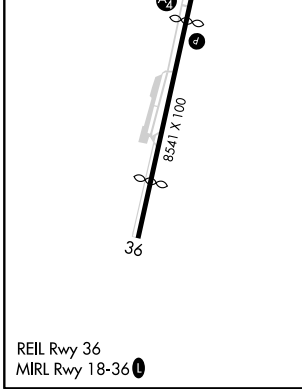
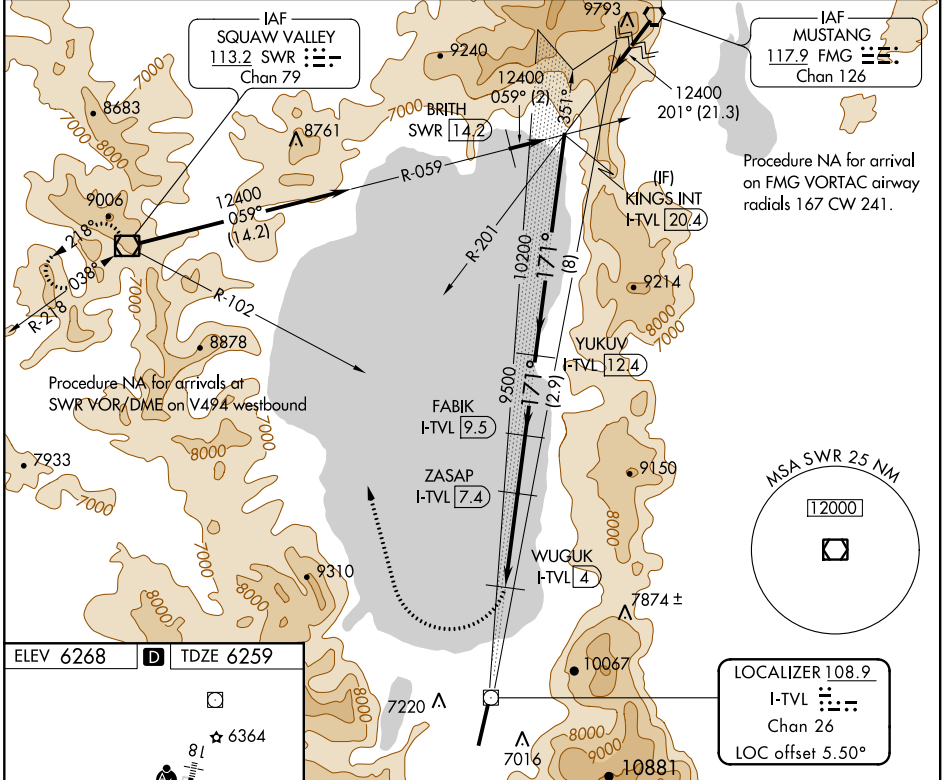
LOC/DME I-TVL 108.9 Chan 26	APP CRS 171°	Rwy Idg TDZE 7017 6259 Apt Elev 6268
--	------------------------	--

LDA RWY 18

LAKE TAHOE (TVL)

DME required.		MALSF	MISSED APPROACH: Climbing right turn to 11000 on heading 329° and SWR VOR/DME R-102 to SWR VOR/DME and hold.
Rwy 18 helicopter visibility reduction below 3/4 SM NA. When local altimeter setting not received, procedure NA.			

ASOS 124.725	OAKLAND CENTER 127.95 316.1	CLNC DEL 134.3	CTAF 122.85
------------------------	---------------------------------------	--------------------------	-----------------------



SW-2, 21 MAY 2020 to 18 JUN 2020

SW-2, 21 MAY 2020 to 18 JUN 2020