

VOR/DME HUO <b>116.1</b> Chan <b>108</b>	APP CRS <b>093°</b>	Rwy Idg <b>2247</b> TDZE <b>523</b> Apt Elev <b>523</b>
--	------------------------	---

# VOR RWY 8

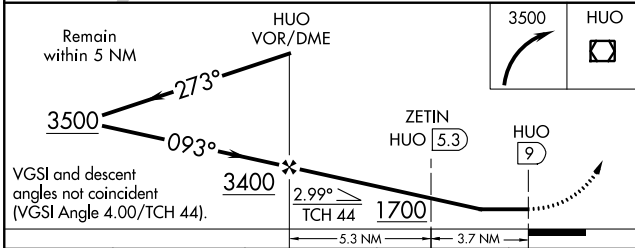
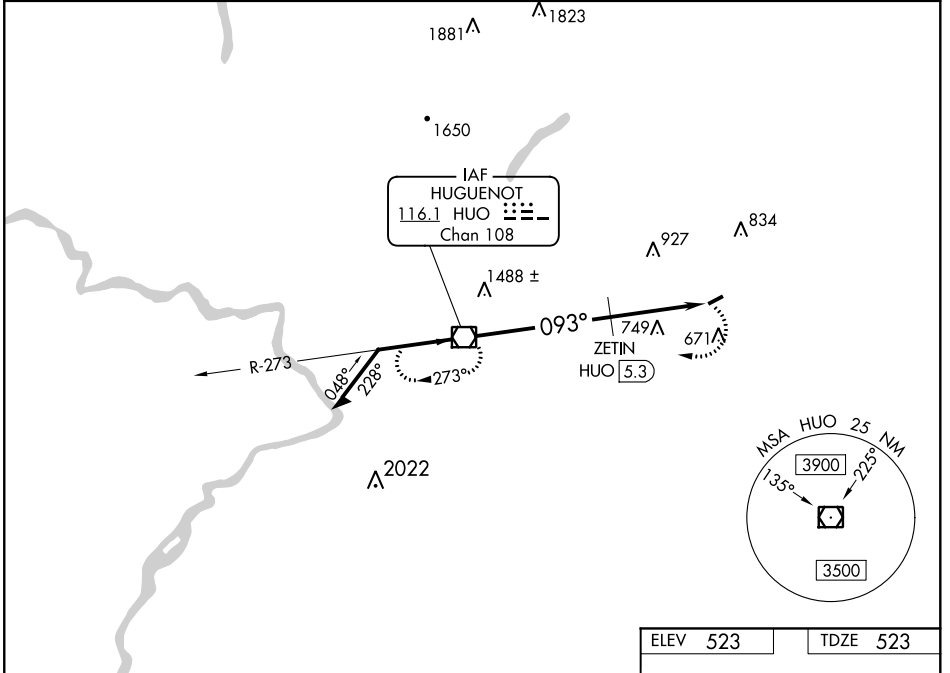
RANDALL (Ø6N)

**NA** Procedure NA at night. Use Newburgh altimeter setting, when not received, use Montgomery altimeter setting. Rwy 8 helicopter visibility reduction below 1 SM NA.

**MISSED APPROACH:** Climbing right turn to 3500 direct HUO VOR/DME and hold.

NEW YORK APP CON **132.75 363.1**

UNICOM **122.8 (CTAF) 0**



ELEV 523	TDZE 523
MIRL Rwy 8-26 0	
FAF to MAP 9 NM	
Knots	60 90 120 150 180
Min:Sec	9:00 6:00 4:30 3:36 3:00

CATEGORY	A	B	C	D
S-8	1700-1¼ 1199 (1200-1¼)		NA	
CIRCLING	1700-1¼ 1177 (1200-1¼)		NA	
ZETIN FIX MINIMUMS				
S-8	1560-1¼ 1037 (1100-1¼)		NA	
CIRCLING	1560-1¼ 1037 (1100-1¼)		NA	

NE-2, 21 MAY 2020 to 18 JUN 2020

NE-2, 21 MAY 2020 to 18 JUN 2020