

APP CRS	Rwy Idg	2247
076°	TDZE	523
	Apt Elev	523

RNAV (GPS) RWY 8

RANDALL (Ø6N)

RNP APCH.

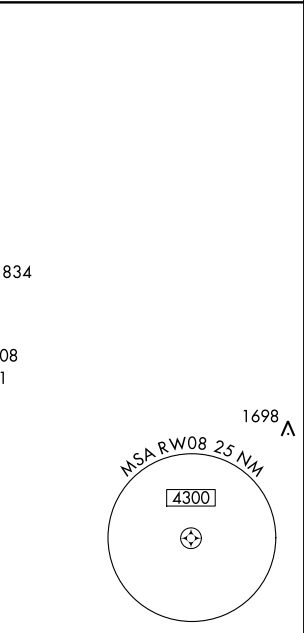
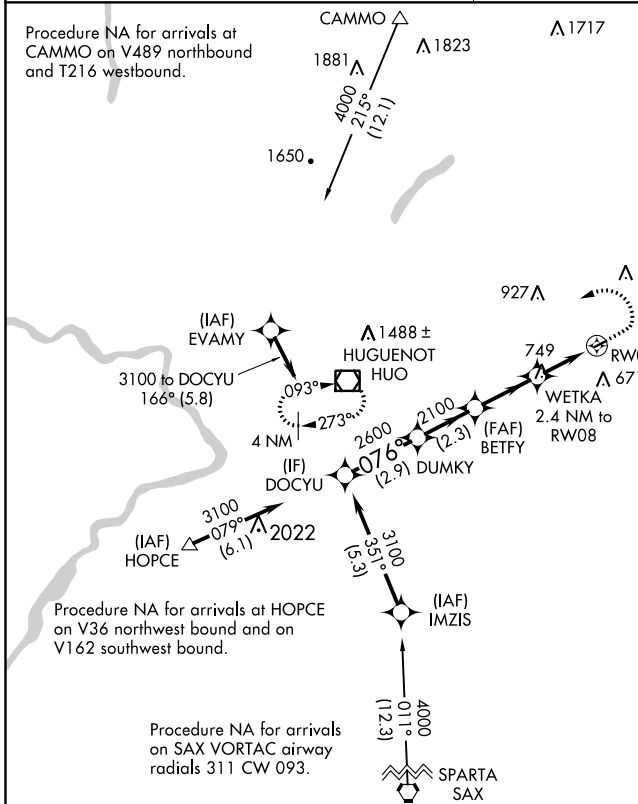
▼ Procedure NA at night. Use Newburgh altimeter setting, when not received, use Montgomery altimeter setting.

▲ NA Rwy 8 helicopter visibility reduction below 1 SM NA.

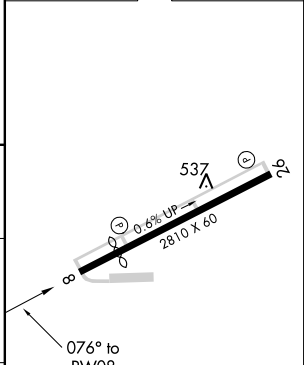
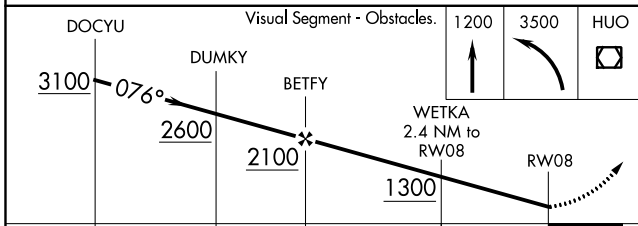
MISSED APPROACH: Climb to 1200 then climbing left turn to 3500 direct HYO VOR/DME and hold, continue climb-in-hold to 3500.

NEW YORK APP CON
132.75 363.1

UNICOM
122.8 (CTAF) 0



ELEV 523	TDZE 523
----------	----------



CATEGORY	A	B	C	D
LNAV MDA	1140-1 617 (700-1)		NA	
CIRCLING	1140-1 617 (700-1)		NA	

MIRL Rwy 8-26 0

NE-2, 21 MAY 2020 to 18 JUN 2020

NE-2, 21 MAY 2020 to 18 JUN 2020