

WAAS CH 40106 W06A	APP CRS 056°	Rwy Idg 5006 TDZE 310 Apt Elev 310
--	------------------------	---

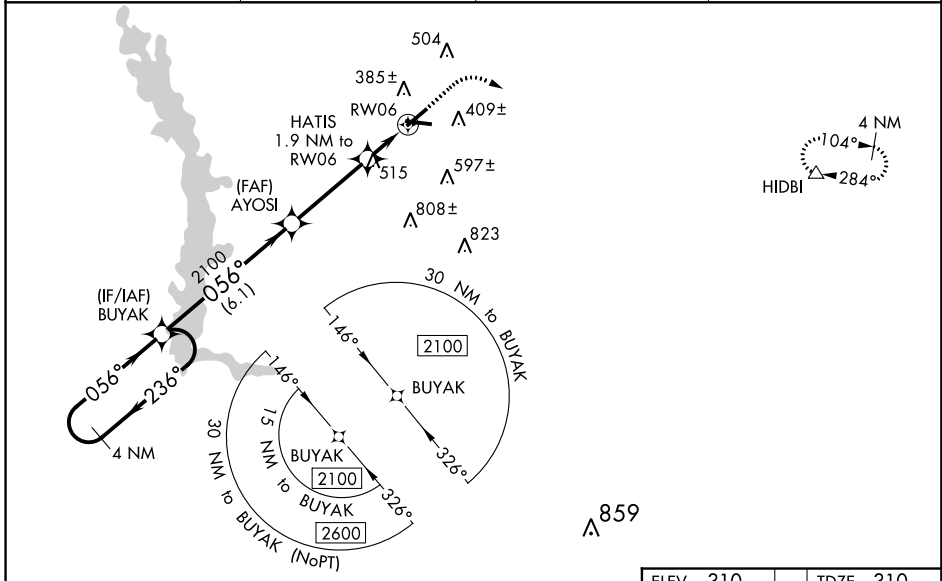
RNAV (GPS) RWY 6

CRISP COUNTY-CORDELE (CKF)

▼ For uncompensated Baro-VNAV systems, LNAV/VNAV NA below -15°C (5°F) or above 54°C (130°F). Baro-VNAV and VDP NA when using Albany altimeter setting.
▲ Rwy 6 helicopter visibility reduction below 3/4 SM NA. DME/DME RNP-0.3 NA.
 Straight-in Rwy 6 NA at night, Circling Rwy 6, 24, 28 NA at night. When local altimeter setting not received, use Albany altimeter setting and increase all DA to 669 feet and all MDA 100 feet; increase LPV and LNAV/VNAV all Cats visibility 1/8 SM and LNAV and Circling Cat C/D visibility 1/4 SM.

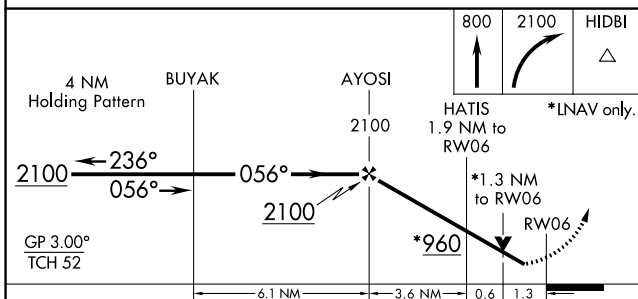
MISSED APPROACH:
 Climb to 800 then climbing right turn to 2100 direct HIDBI and hold.

AWOS-3PT 119.325	JACKSONVILLE CENTER 125.75 226.8	GCO 121.725	UNICOM 123.050 (CTAF) 0
----------------------------	--	-----------------------	-----------------------------------



SE-4, 21 MAY 2020 to 18 JUN 2020

SE-4, 21 MAY 2020 to 18 JUN 2020



ELEV 310	TDZE 310
----------	----------

CATEGORY	A	B	C	D
LPV DA	573-1		263 (300-1)	
LNAV/DA	572-1		262 (300-1)	
LNAV MDA	780-1	470 (500-1)	780-1 ³ / ₈	470 (500-1 ³ / ₈)
C CIRCLING	780-1 470 (500-1)	820-1 510 (600-1)	1080-2 ¹ / ₄ 770 (800-1 ¹ / ₄)	1160-2 ³ / ₄ 850 (900-1 ³ / ₄)

