

WAAS CH 99305 W28A	APP CRS 284°	Rwy Idg 5001 TDZE 309 Apt Elev 310
--	------------------------	---

RNAV (GPS) RWY 28

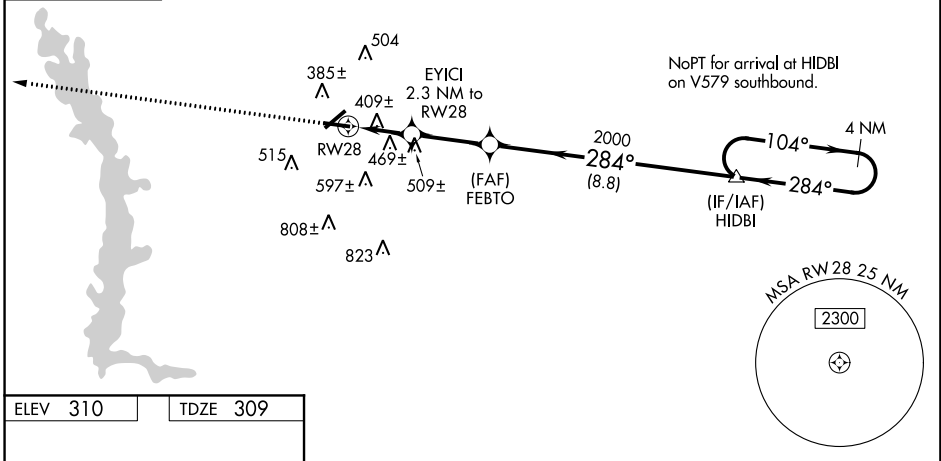
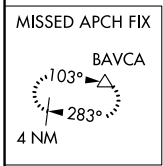
CRISP COUNTY-CORDELE (CKF)

⚠ Baro-VNAV NA when using Albany altimeter setting. For uncompensated Baro-VNAV systems, LNAV/VNAV NA below -15°C (5° F) or above 54°C (130°F). Rwy 28 helicopter visibility reduction below 1 SM NA. DME/DME RNP-0.3 NA. Straight-in and Circling Rwy 28 NA at night. When local altimeter setting not received, use Albany altimeter setting: increase LPV DA to 765 feet; LNAV/VNAV DA to 865 feet and increase all MDA 100 feet, increase LPV and LNAV/VNAV all Cats visibility 3/8 SM; increase LNAV and Circling Cats C and D visibility 1/4 SM.

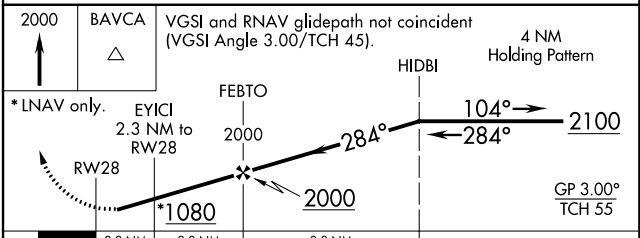
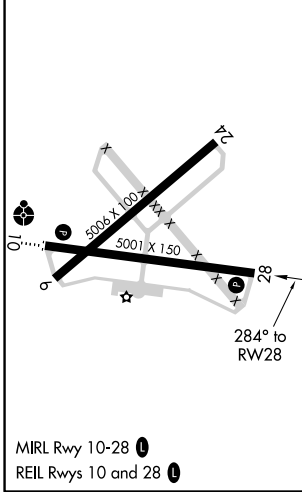
MISSED APPROACH:
Climb to 2000 direct BAVCA and hold.

AWOS-3PT 119.325	JACKSONVILLE CENTER 125.75 226.8	GCO 121.725	UNICOM 123.050 (CTAF) 0
----------------------------	--	-----------------------	-----------------------------------

△ 833±



ELEV 310	TDZE 309
----------	----------



CATEGORY	A	B	C	D
LPV DA		669-1 1/8	360 (400-1 1/8)	
LNAV/VNAV DA		769-1 1/2	460 (500-1 1/2)	
LNAV MDA	720-1	411 (500-1)	720-1 1/8	411 (500-1 1/8)
C CIRCLING	760-1 450 (500-1)	820-1 510 (600-1)	1080-2 1/4 770 (800-2 1/4)	1160-2 3/4 850 (900-2 3/4)

SE-4, 21 MAY 2020 to 18 JUN 2020

SE-4, 21 MAY 2020 to 18 JUN 2020