

WAAS CH 90206 W24A	APP CRS 236°	Rwy Idg 5006 TDZE 308 Apt Elev 310
--	------------------------	---

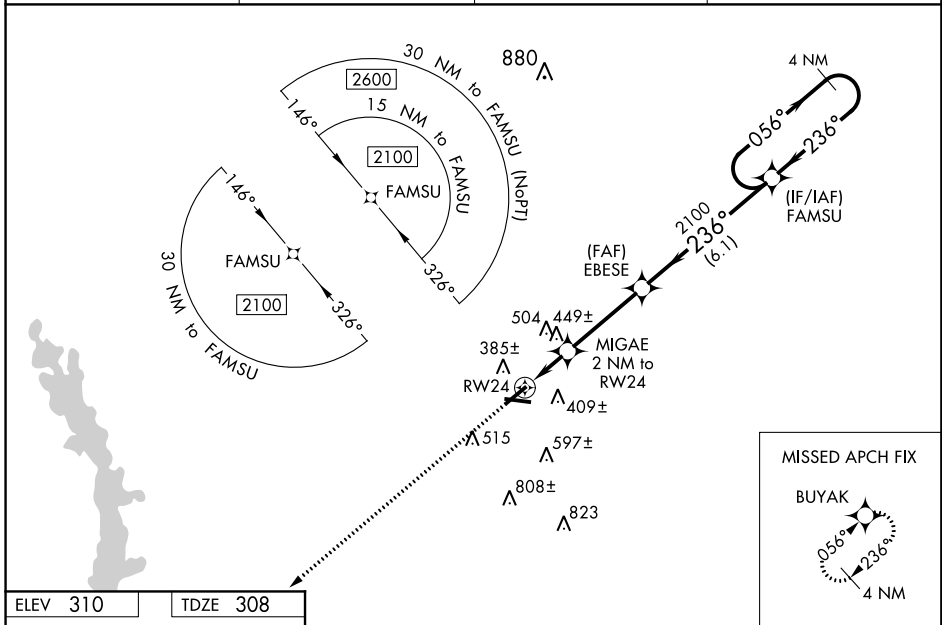
RNAV (GPS) RWY 24

CRISP COUNTY-CORDELE (CKF)

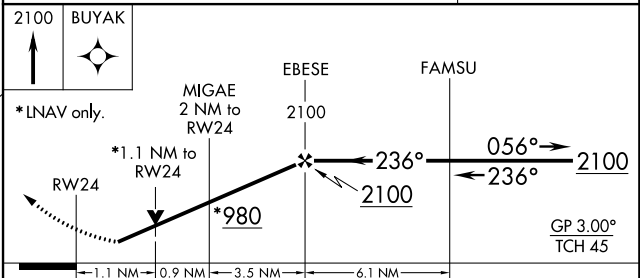
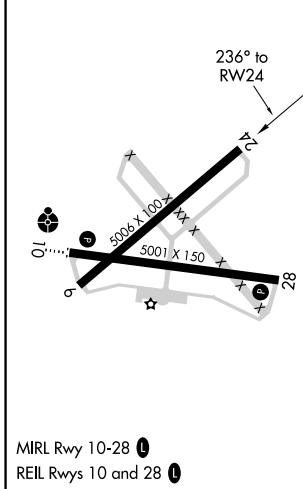
⚠ For uncompensated Baro-VNAV systems, LNAV/VNAV NA below -15° C (5° F) or above 54° C (130° F). Baro-VNAV and VDP NA when using Albany altimeter setting. Rwy 24 helicopter visibility reduction below 3/4 NA. DME/DME RNP-0.3 NA. Straight-in Rwy 24 NA at night, Circling Rwy 6, 24, 28 NA at night. When local altimeter setting not received, use Albany altimeter setting and increase all DA to 680 feet and all MDA 100 feet; increase LPV all Cats and LNAV/VNAV all Cats visibility 1/4 SM and LNAV Cat C/D and Circling Cat C/D visibility 1/4 SM.

MISSED APPROACH:
Climb to 2100 direct BUYAK and hold.

AWOS-3PT 119.325	JACKSONVILLE CENTER 125.75 226.8	GCO 121.725	UNICOM 123.050 (CTAF) 0
----------------------------	--	-----------------------	-----------------------------------



ELEV 310	TDZE 308
----------	----------



CATEGORY	A	B	C	D
LPV DA		583-1	275 (300-1)	
LNAV/VNAV DA		584-1	276 (300-1)	
LNAV MDA	700-1	392 (400-1)	700-1 1/8	392 (400-1 1/8)
C CIRCLING	760-1 450 (500-1)	820-1 510 (600-1)	1080-2 1/4 770 (800-2 1/4)	1160-2 3/4 850 (900-2 3/4)

SE-4, 21 MAY 2020 to 18 JUN 2020

SE-4, 21 MAY 2020 to 18 JUN 2020