

WAAS CH 58022 W22A	APP CRS 223°	Rwy Idg TDZE Apt Elev	4418 172 172
--	------------------------	-----------------------------	---

RNAV (GPS) RWY 22

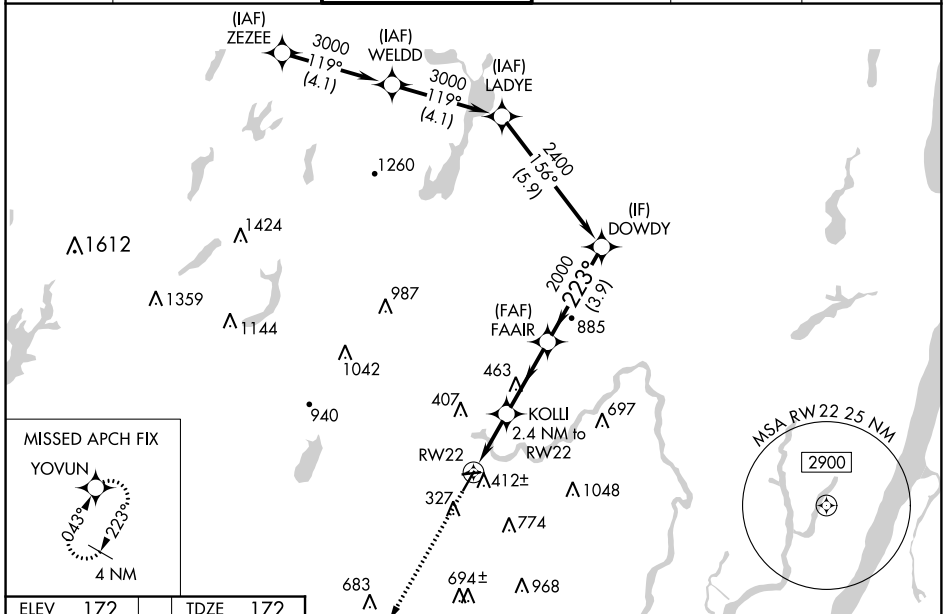
ESSEX COUNTY (CDW)

RNP APCH.

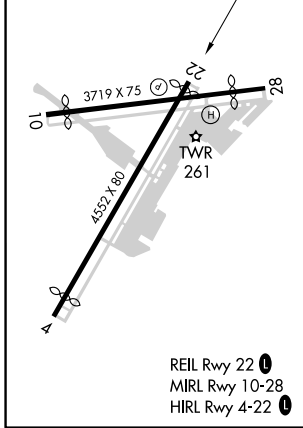
▼ Rwy 22 helicopter visibility reduction below 1 SM NA. Baro-VNAV NA when using Newark altimeter setting. For uncompensated Baro-VNAV systems, LNAV/VNAV NA below -15°C or above 54°C. When local altimeter setting not received, use Newark altimeter setting and increase all DA 50 feet and all MDA 60 feet; increase LNAV/VNAV all Cats and LNAV Cat C and Circling Cats A and C visibility ¼ mile. Circling Rwy 4, 10, 28 NA at night.

MISSED APPROACH:
Climb to 2000 direct YOVUN and hold.

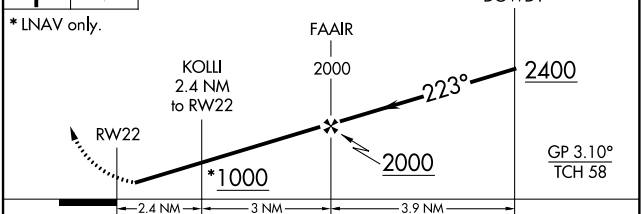
ATIS 135.5	NEW YORK APP CON 127.6 379.9	CALDWELL TOWER ★ 119.8 (CTAF) 0	GND CON 121.9	CLNC DEL 121.1	UNICOM 122.95
----------------------	--	---	-------------------------	--------------------------	-------------------------



ELEV 172	TDZE 172
----------	----------



2000 YOVUN VGSI and descent angles not coincident (VGSI Angle 3.00/TCH 42).



CATEGORY	A	B	C	D
LPV DA	459-1	287 (300-1)		NA
LNAV/VNAV DA	610-1⅓	438 (500-1⅓)		NA
LNAV MDA	680-1	508 (600-1)	680-1⅓ 508 (600-1⅓)	NA
C CIRCLING	960-1 788 (800-1)	1040-2 868 (900-2)	1100-2¾ 928 (1000-2¾)	NA

NE-2, 21 MAY 2020 to 18 JUN 2020

NE-2, 21 MAY 2020 to 18 JUN 2020