

VORTAC ODF <b>113.4</b> Chan 81	APP CRS <b>179°</b>	Rwy Idg TDZE Apt Elev	<b>5008</b> <b>980</b> <b>996</b>
---------------------------------------	------------------------	-----------------------------	---

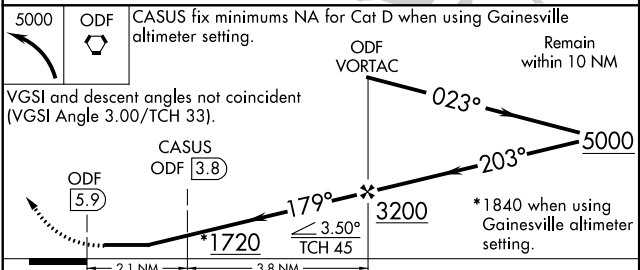
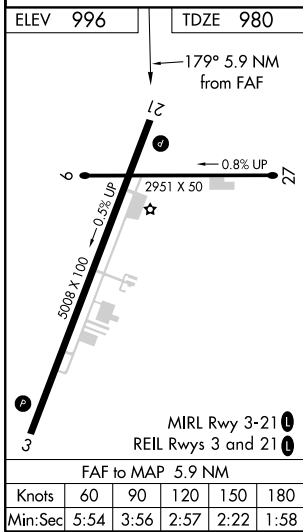
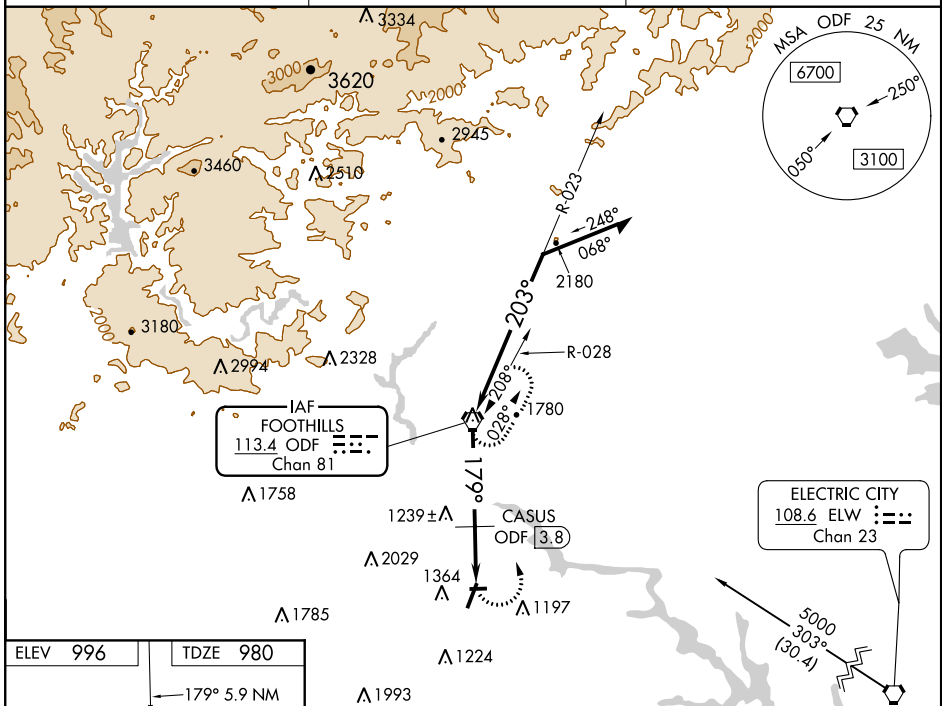
# VOR RWY 21

TOCCOA RG LETOURNEAU FIELD (TOC)

**NA** When local altimeter setting not received, use Gainesville altimeter setting and increase all MDA 120 feet. Increase Circling visibility Cats A/B ¼ mile, Cat C ½ mile. CASUS fix minimums increase Circling visibility Cats A/B ¼ mile, Cat C ½ mile.

MISSED APPROACH: Climbing left turn to 5000 direct ODF VORTAC and hold, continue climb-in-hold to 5000.

AWOS-3 <b>119.625</b>	ATLANTA CENTER <b>134.8 379.95</b>	UNICOM <b>122.8 (CTAF) 0</b>
--------------------------	---------------------------------------	---------------------------------



CATEGORY	A	B	C	D
S-21	1720-1	740 (800-1)	1720-2	740 (800-2)
<b>CIRCLING</b>	1720-1	724 (800-1)	1760-2¼ 764 (800-2¼)	2480-3 1484 (1500-3)
CASUS FIX MINIMUMS				
S-21	1560-1	580 (600-1)	1560-1¾	580 (600-1¾)
<b>CIRCLING</b>	1720-1	724 (800-1)	1760-2¼ 764 (800-2¼)	2480-3 1484 (1500-3)

SE-4, 21 MAY 2020 to 18 JUN 2020

SE-4, 21 MAY 2020 to 18 JUN 2020