

WAAS CH <b>61005</b> <b>W21A</b>	APP CRS <b>207°</b>	Rwy ldg TDZE <b>980</b> Apt Elev <b>996</b>	<b>5008</b>
--	------------------------	---	-------------

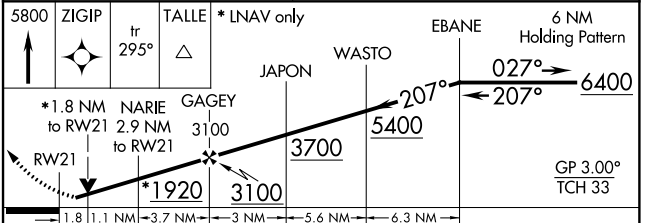
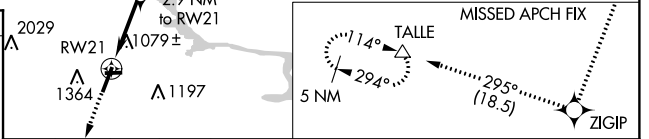
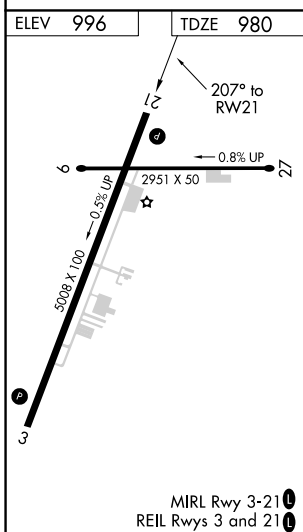
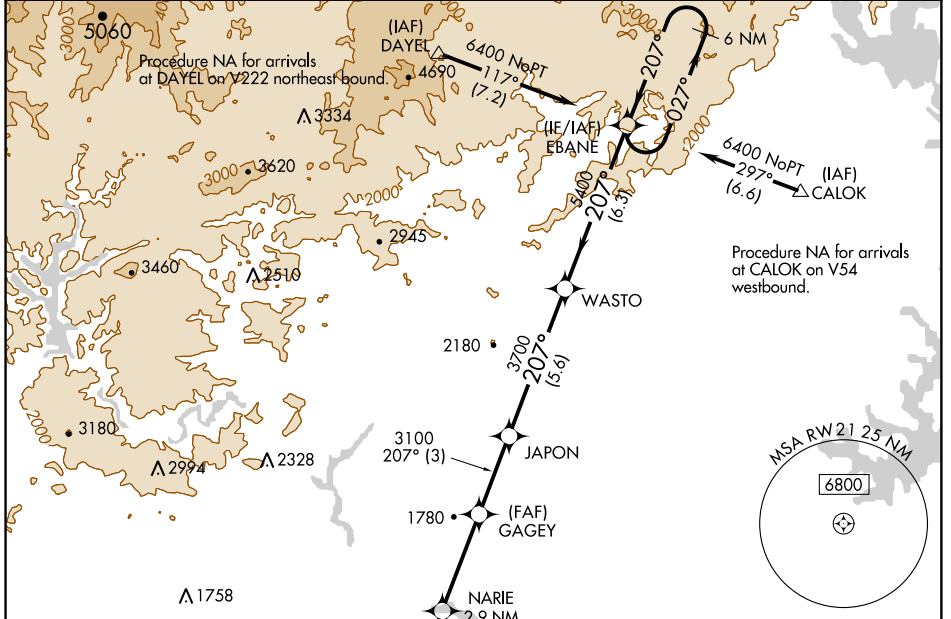
# RNAV (GPS) RWY 21

TOCCOA RG LETOURNEAU FIELD (TOC)

**Baro-VNAV and VDP NA** when using Gainesville altimeter setting. For uncompensated Baro-VNAV NA systems, LNAV/VNAV NA below -8°C (18°F) or above 54°C (130°F). DME/DME RNP-0.3 NA. When local altimeter setting not received use Gainesville altimeter setting and increase LPV DA to 1345 ft, LNAV/VNAV DA to 1510 ft, and all MDA 120 ft, increase LPV and LNAV all Cats visibility 1/4 mile, LNAV/VNAV all Cats visibility 3/8 mile. Increase Circling Cats A/B/C visibility 1/4 mile.

**MISSED APPROACH:** Climb to 5800 direct ZIGIP and on track 295° to TALLE and hold, continue climb-in-hold to 5800.

AWOS-3 <b>119.625</b>	ATLANTA CENTER <b>134.8 379.95</b>	UNICOM <b>122.8 (CTAF) 0</b>
--------------------------	---------------------------------------	---------------------------------



CATEGORY	A	B	C	D
LPV DA		1230-1	250 (300-1)	
LNAV/VNAV DA		1395-1½	415 (400-1½)	
LNAV MDA	1560-1	580 (600-1)	1560-1½	580 (600-1½)
<b>CIRCLING</b>	1720-1	724 (800-1)	1760-2¼ 764 (800-2¼)	2480-3 1484 (1500-3)

SE-4, 21 MAY 2020 to 18 JUN 2020

SE-4, 21 MAY 2020 to 18 JUN 2020