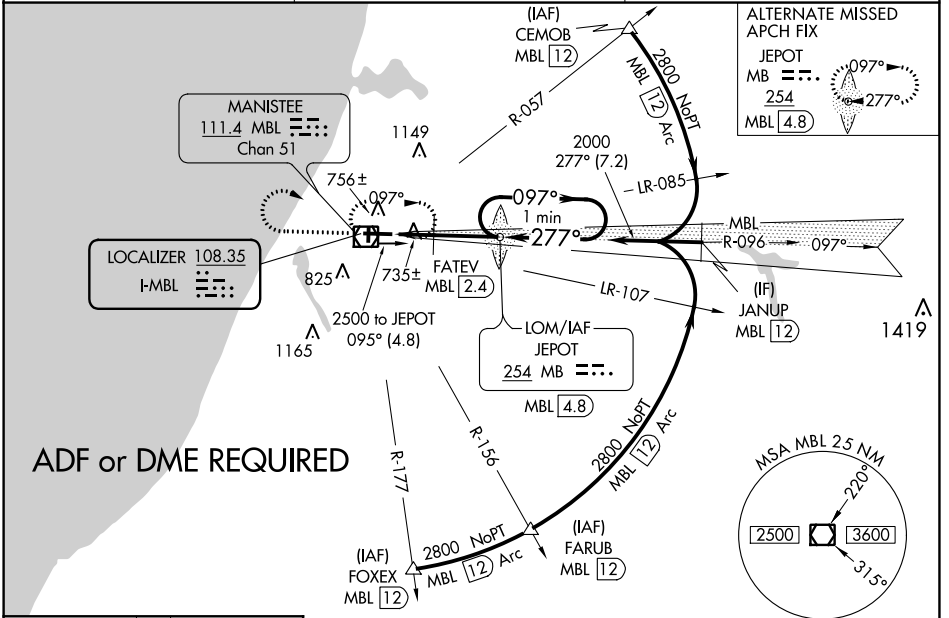


LOC I-MBL 108.35	APP CRS 277°	Rwy Idg 5501
		TDZE 621
		Apt Elev 621

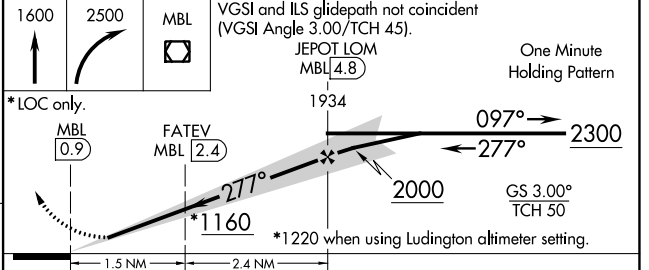
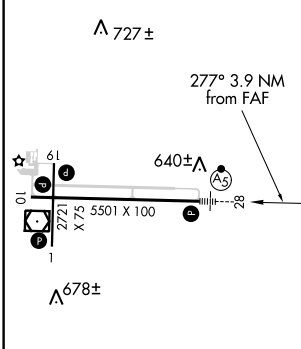
ILS or LOC RWY 28
MANISTEE COUNTY-BLACKER (MBL)

<p>▼ NA</p> <p>Night landing: Rwy 1/19 NA. When local altimeter not received, use Ludington altimeter setting and increase call DA 50 feet and all MDA 60 feet; increase S-LOC 28 Cat C/D visibility 1/4 mile, and Circling Cat C visibility 1/4 mile. FATEV FIX minimums: increase S-LOC 28 Cat C/D visibility 1/8 mile and Circling Cat C 1/4 mile.</p>	<p>MALSR</p>	<p>MISSED APPROACH: Climb to 1600 then climbing right turn to 2500 direct MBL VOR/DME and hold, continue climb-in-hold to 2500.</p>

AWOS-3PT 111.4	MINNEAPOLIS CENTER 120.85 322.35	UNICOM 122.8 (CTAF)
--------------------------	--	-------------------------------



ELEV 621	TDZE 621
----------	----------



CATEGORY	A	B	C	D
S-ILS 28	821-1/2 200 (200-1/2)			
S-LOC 28	1160-1/2	539 (600-1/2)	1160-1	539 (600-1)
CIRCLING	1160-1	539 (600-1)	1200-1 1/2 579 (600-1 1/2)	1300-2 1/4 679 (700-2 1/4)
FATEV FIX MINIMUMS				
S-LOC 28	1000-1/2	379 (400-1/2)	1000-5/8	379 (400-5/8)
CIRCLING	1120-1 499 (500-1)	1160-1 539 (600-1)	1200-1 1/2 579 (600-1 1/2)	1300-2 1/4 679 (700-2 1/4)

EC-1, 21 MAY 2020 to 18 JUN 2020

EC-1, 21 MAY 2020 to 18 JUN 2020